

## Title: Adding Microsoft Virtual Server 2005 Access Service™ to KVM.net® II System.

**No: IPA28-2**

**Date: Tuesday, 14 October, 2008**

### **SUMMARY:**

Creating new Access Service will allow operating Microsoft Virtual Server 2005 virtual machines from KVM.net II.

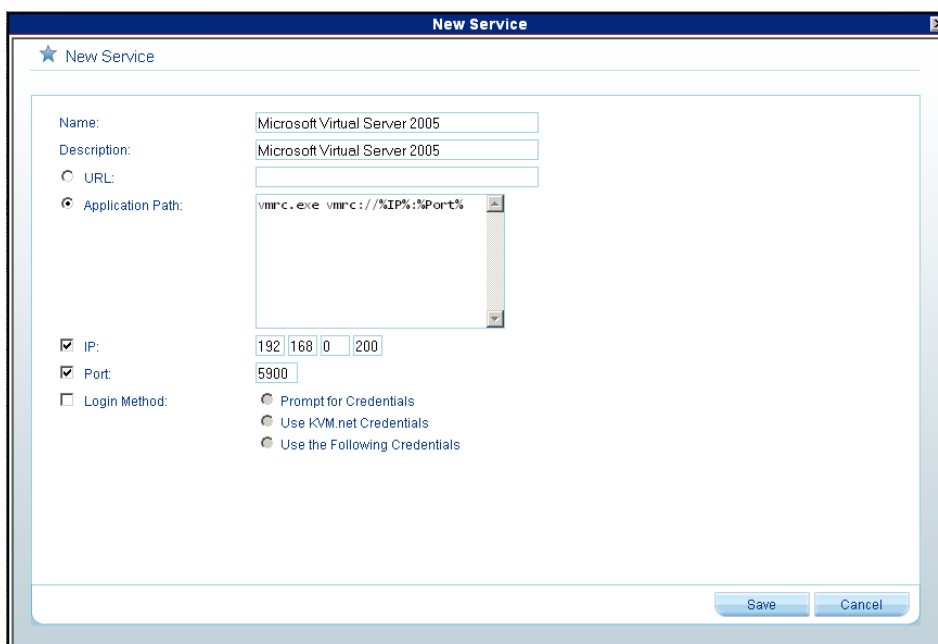
### **MORE INFORMATION:**

For remote management of virtual machines, Virtual Server 2005 provides a Virtual Machine Remote Control (VMRC) client. This is a stand-alone client application that communicates with the VMRC server component of the Virtual Server service (Vssrvc.exe). (See IPA29-2 for more information about configuration of VMRC Server.)

Download the **vmrc.exe** application from Microsoft Virtual Server 2005.

Create New Access Service™ for Microsoft Virtual Server 2005.

1. Click **New Service** button in **Settings > Access Services** page of the KVM.net II.
2. Give an explanatory name to the Access Service, e.g. Microsoft Virtual Server 2005.
3. Provide description to the Access Service (optional).
4. Select the **Application Path** and type the following command in the corresponding field: **vmrc.exe vmrc://%IP%:%Port%**
5. Select **IP** check box and type the IP address of the Microsoft Virtual Server 2005.
6. Select **Port** check box and type the TCP/IP port number of the VMRC Server. Use the port number you assigned during configuration of the Virtual Machine Remote Control Server. (See IPA29-2 for more information.)
7. Leave the **Login Method** unselected.
8. Press **Save** button.

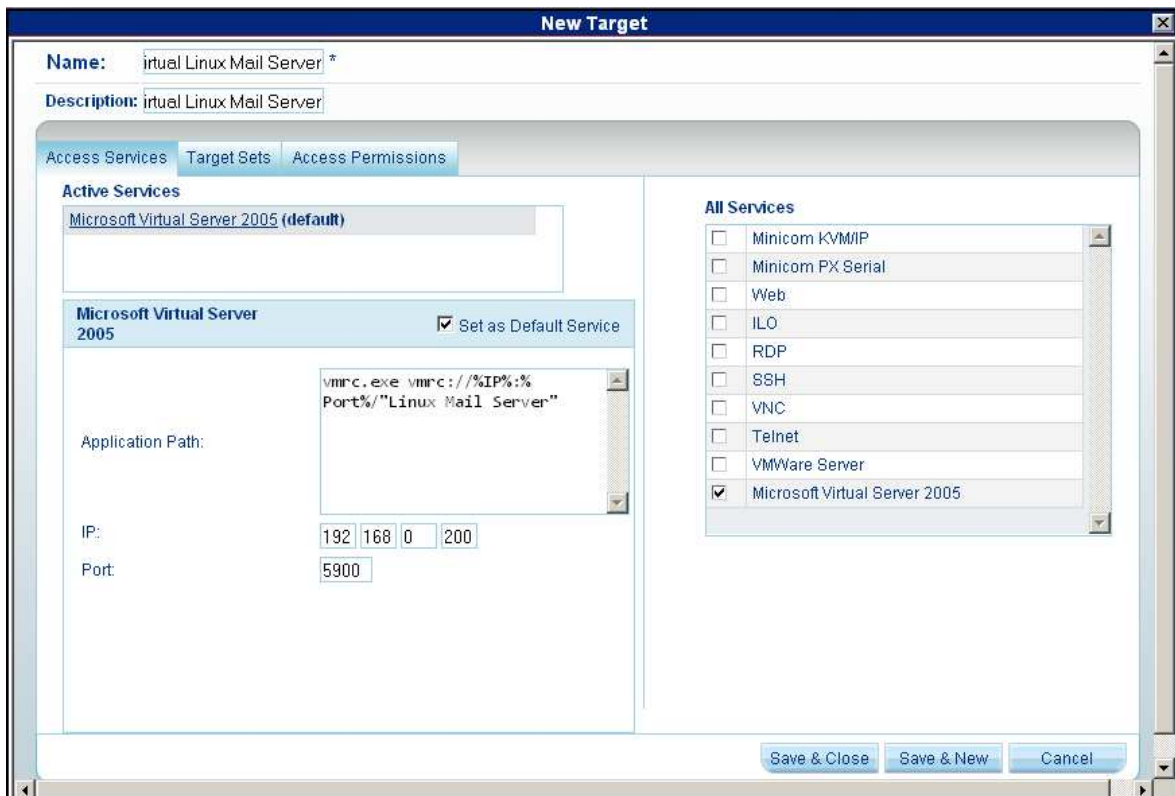


The screenshot shows the 'New Service' dialog box with the following configuration:

- Name: Microsoft Virtual Server 2005
- Description: Microsoft Virtual Server 2005
- URL: (empty)
- Application Path: vmrc.exe vmrc://%IP%:%Port%
- IP:  192.168.0.200
- Port:  5900
- Login Method: 
  - Prompt for Credentials
  - Use KVM.net Credentials
  - Use the Following Credentials

Create a virtual machine Target based on the Microsoft Virtual Server 2005 Access Service.

1. In the **Management, Targets** page click **New Target** button.
2. Give a name for the virtual machine Target.
3. Provide description for the Target (optional).
4. In the **All Services** section select **Microsoft Virtual Server 2005**.
5. In the **All Services** section unselect **Minicom KVM/IP**.
6. Set Microsoft Virtual Server 2005 Access Service to be a **Default Access Service**.
7. In the end of the vmrc command in the **Application Path** field, type the name of the virtual machine as it appears in the Microsoft Virtual Server 2005, e.g. **vmrc.exe vmrc://%IP%:%Port%/"Linux Mail Server"** (ensure that there is no space between %Port% and /"Virtual Machine Name" parameters).
8. Configure the **Target Sets** and **Access Permissions** assignments and press **Save & Close** or **Save & New** button.



In the KVM.net II **Access** Section select the virtual machine target. A “**Select file to launch**” dialog box will appear. Navigate to the location where the **vmrc.exe** application is saved and click **Open**.

Connection to virtual machine of the Microsoft Virtual Server 2005 is established.

## **COMMENTS:**

Vmrc.exe uses Automatic, NTLM, or Kerberos authentication to the Microsoft Virtual Server 2005 virtual machines. The same user name and password should exist on the client machine and server running Microsoft Virtual Server 2005 or both machines should be members of the Active Directory Domain. If user doesn't exist in the Microsoft Virtual Server 2005 machine, a login prompt will appear.

See Product Technical Information Sheet IPA29-2 for correct configuration of Microsoft Virtual Server 2005 and enabling and configuring the VMRC Server.