

Title: Configuring Microsoft Virtual Server 2005 to enable Virtual Machine Remote Control Server.

No: IPA29-2

Date: Tuesday, 14 October, 2008

SUMMARY:

Enabling Virtual Machine Remote Control (VMRC) Server is required in order to access the virtual machines from KVM.net® II system. Access to Microsoft Virtual Server 2005 virtual machines is established by means of Virtual Machine Remote Control (VMRC) Client application vmrc.exe.

MORE INFORMATION:

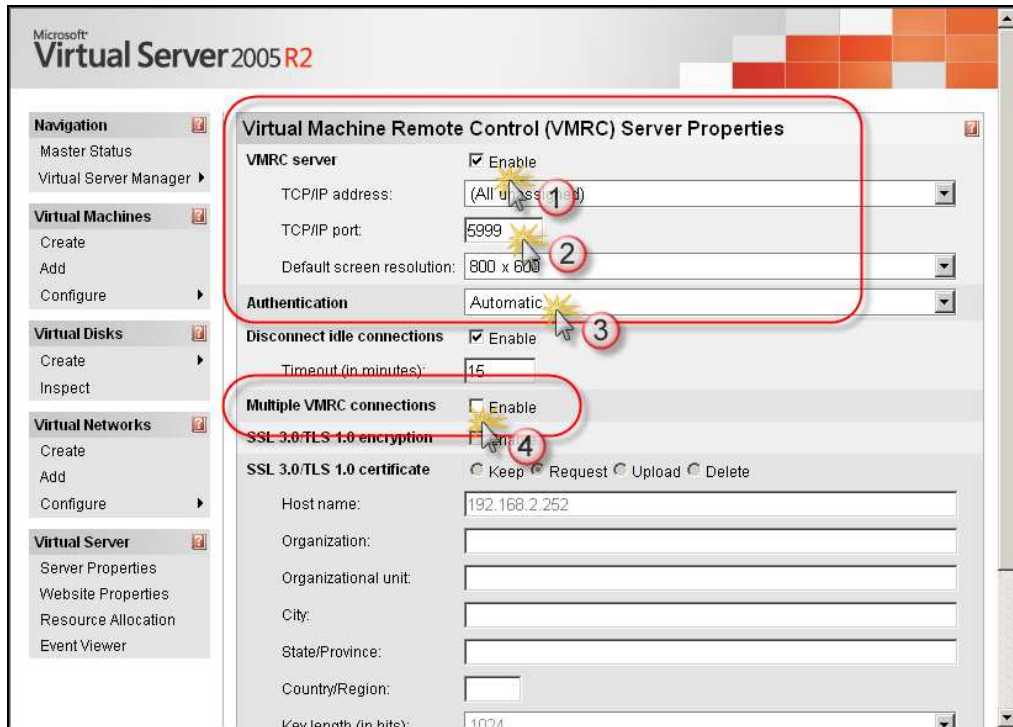
In order to enable the remote access to Microsoft Virtual Server 2005 virtual machines, the Virtual Machine Remote Control (VMRC) Server should be enabled and configured. To enable the Virtual Machine Remote Control (VMRC) Server:

1. Start Virtual Server Administration Website in **Programs > Microsoft Virtual Server > Virtual Server Administration Website**.
2. Login to Virtual Server Administration Website.
3. In the **Virtual Server** section, select the **Server Properties**.
4. In the **Virtual Server Properties** section select the **Virtual Machine Remote Control (VMRC) Server**.



5. Configure the VMRC Server properties:
 - a. In the **VMRC server** section check “**Enable**” check box
 - b. Assign **TCP/IP address** or leave “(All unassigned)” to enable VMRC Server on all server’s TCP/IP addresses.

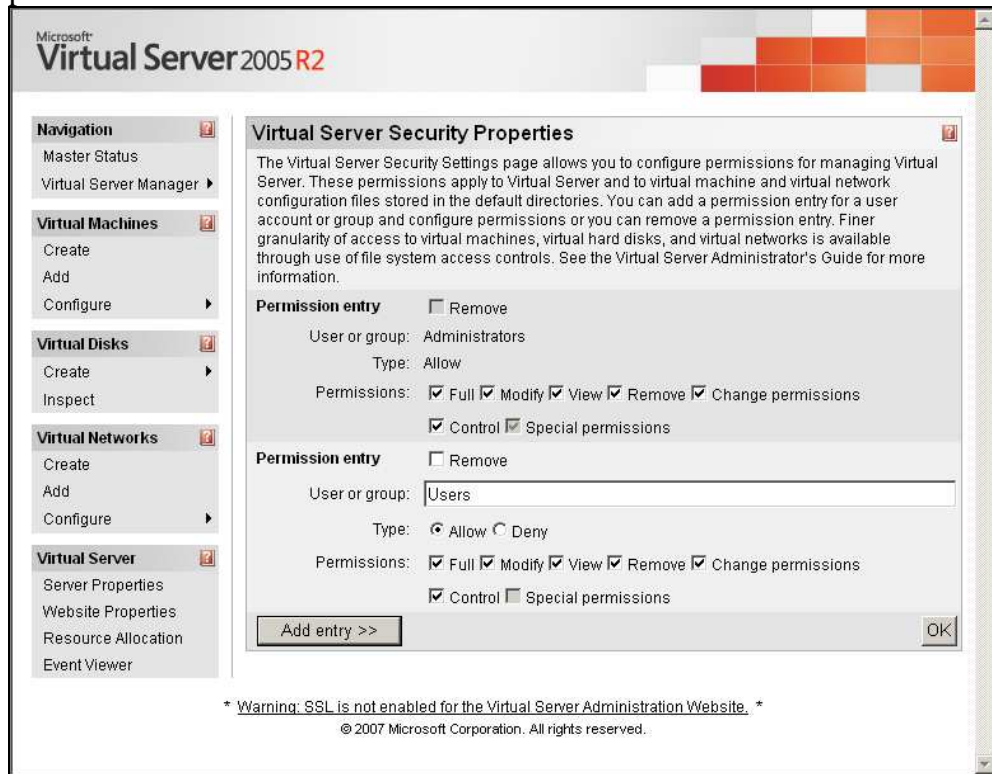
- c. Configure the **TCP/IP port** values.
Note! You can use a port number from 5900 (Default) through 5999.
- d. Configure the **Default screen resolution** for the VMRC client (optional).
- e. Configure the **Authentication** type: Automatic, NTLM or Kerberos. If you specify Kerberos authentication, only users logging on with domain accounts will be able to use the VMRC client.
- f. Configure other settings according to your preferences.



- 6. Press **OK** button to save the changes.
- 7. To configure the Virtual Server Security Properties and configure the user permissions for managing the Virtual Server, select the **Virtual Server security** in the **Virtual Server Properties** section.

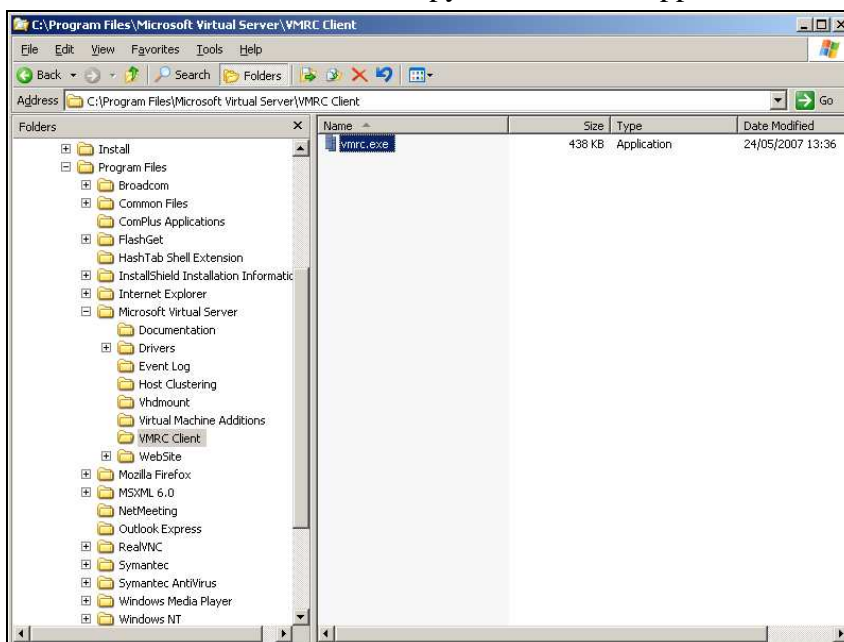


8. By default, only the members of Administrators group have access to the Virtual Machines and other Server properties. To add members of the Users group or any other group click **Add entry** button, type the Group name and assign the security permissions.



9. Click **OK** button to save the changes.
10. Virtual Machine Remote Control (VMRC) Server is configured to accept the client connections to the virtual machines.

For remote management of virtual machines, Virtual Server 2005 provides a Virtual Machine Remote Control (VMRC) client **vmrc.exe**. This is a stand-alone client application that communicates with the VMRC server. The **vmrc.exe** client application is located in **C:\Program Files\Microsoft Virtual Server\VMRC Client** folder in the Microsoft Virtual Server 2005 machine. Copy the **vmrc.exe** application to every client computer.



COMMENTS:

Configure the KVM.net® II Access Service™ and Virtual Machine Targets according to the Product Technical Information Sheet IPA28-2. Use Virtual Machine Name in the Target's Application Path as it appears in the Microsoft Virtual Server 2005 Master Status.

The screenshot displays the Microsoft Virtual Server 2005 R2 interface. On the left is a navigation pane with categories: Master Status, Virtual Machines, Virtual Disks, Virtual Networks, and Virtual Server. The main area is divided into two sections: '192.168.2.252 Status' and '192.168.2.252 Recent Events'. The status section contains a table of virtual machines, and the events section contains a log of system messages.

Remote View	Virtual Machine Name	Status	Running Time	CPU Usage
	Linux Mail Server	Off	n/a	n/a
	Windows 3.11	Off	n/a	n/a
	Windows XP SP3	Running	4 hours, 56 minutes	

Type	Date/Time	Category	Message
	13/10/2008 19:58:18	Remote Control	The user "COMPALPHATEST\Administrator" at Internet address 192.168.2.139 has disconnected from the VMRC server.
	13/10/2008 19:54:24	Virtual Machine	The user "COMPALPHATEST\Administrator" at Internet address 192.168.2.139 switched the VMRC display to "Windows XP SP3".
	13/10/2008 19:54:24	Remote Control	The user "COMPALPHATEST\Administrator" at Internet address 192.168.2.139 established a new connection to the VMRC server using NTLM authentication. The administration display is currently displayed.
	13/10/2008	Setting	The setting "hardware/pci_bus/ide_adapter/ide_controller