

## Title: Accessing Minicom Legacy KVMIP Devices from Centralized Management System

**No: IPA30-3**

**Date: Wednesday, 28 October, 2009**

### **SUMMARY:**

The specially created Access Service™ allows accessing and operating Minicom legacy KVMIP devices – Smart IP Extender, IP Link, Phantom MXIP, Smart 16 IP and DXUIP, all from Centralized Management System interface. KVM Vision Viewer software is required for accessing and operating the Minicom legacy KVMIP devices.

### **MORE INFORMATION:**

To access and operate Minicom legacy KVMIP devices (Smart IP Extender, IP Link, Phantom MXIP, Smart 16 IP and DXUIP) create a new Access Service for Minicom legacy KVMIP devices, install KVM Vision Viewer software on all client computers and create the targets with correct access parameters.

***Note!** Finish configuration of the Minicom legacy KVMIP devices prior to configuring the Centralized Management System targets.*

Download KVM Vision Viewer from Minicom support web site:

[http://support.minicom.com/KVMnet/Tools/KVM\\_Vision\\_Viewer\\_2.0.8.exe](http://support.minicom.com/KVMnet/Tools/KVM_Vision_Viewer_2.0.8.exe) and install it in all client computers.

Create New Access Service™ for Minicom legacy KVMIP devices.

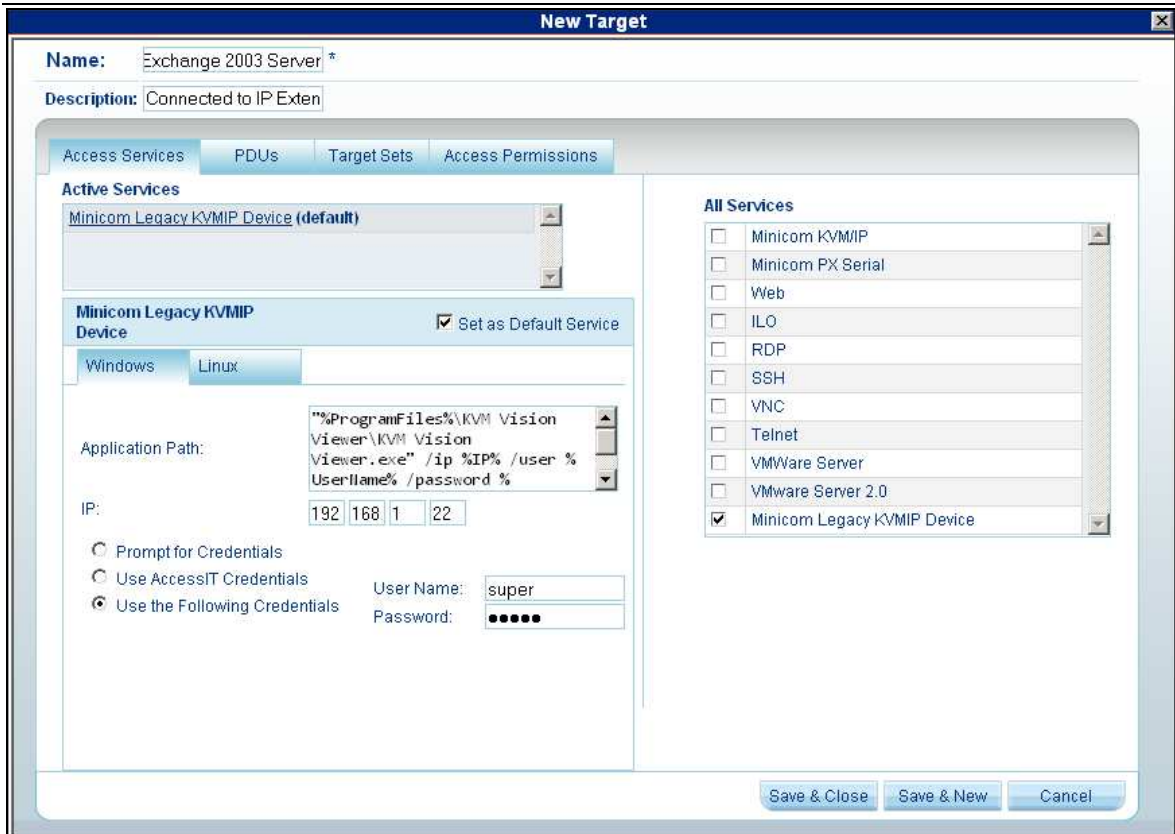
1. Click **New Service** button in **Settings > Access Services** page of the Centralized Management System.
2. On the Windows give an explanatory name to the Access Service, e.g. Minicom Legacy KVMIP Device
3. Provide a description to the Access Service (optional).
4. Select **Application Path** and type the following command in the corresponding field: `"%ProgramFiles%\KVM Vision Viewer\KVM Vision Viewer.exe" /ip %IP% /user %UserName% /password %Password% /fullscreen "yes" /TRUECOLOR "yes"` where
  - a. %ProgramFiles% - variable indicating the location of the “Program Files” folder on the client system.
  - b. /fullscreen “yes” value instructs the remote console window to start in the full screen (“yes”) mode or in the window mode (“no”).
  - c. /TRUECOLOR “yes” value instructs the remote console window to start in the true color mode (“yes”) or in 256 colors mode (“no”).
5. Select **IP** check box. Leave the IP address fields empty. Configuration of the device IP address will be performed during creation of the target.
6. Select the **Login Method** check box and either select **Use KVM.net II/AccessIT Credentials** or **Use the Following Credentials**. If you selected **Use KVM.net**

**II/AccessIT Credentials** all Centralized Access Management users and their passwords must exist in the legacy KVMIP device. If you selected **Use the Following Credentials**, type the User Name and Password in designated fields. This user name and password must exist in the legacy KVMIP device.

7. Press **Save** button.

Create a Target based on the Minicom Legacy KVMIP Device Access Service.

1. In the **Management, Targets** page click **New Target** button.
2. Give a name to the Target.
3. Provide description for the Target (optional).
4. In the **All Services** section select **Minicom Legacy KVMIP Device**.
5. In the **All Services** section unselect **Minicom KVM/IP**.
6. Set Minicom Legacy KVMIP Device Access Service to be a **Default Access Service**.
7. Type the legacy KVMIP device IP address in the IP fields.
8. Configure the **Login Method** if it differs from one configured in the Access Service.
9. Configure the **Target Sets** and **Access Permissions** assignments and press **Save & Close** or **Save & New** button.



In the **Access** Section select the target connected to Minicom legacy KVMIP device. If the KVM Vision Viewer software is not installed in the default path, a “**Select file to launch**” dialog box will appear. Navigate to the location where the KVM Vision Viewer software is installed, select **KVM Vision Viewer.exe** and click **Open**.

Connection to Minicom legacy KVMIP device is established.

### **COMMENTS:**

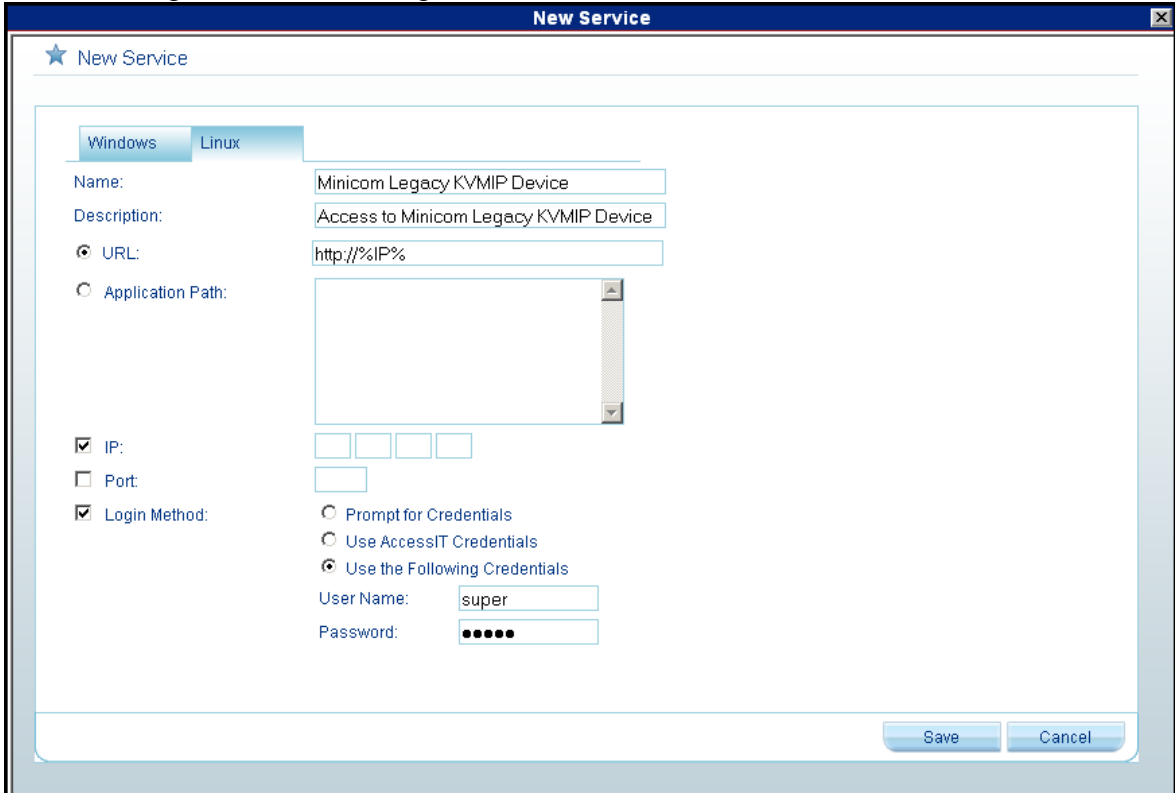
- If connection to Minicom legacy KVMIP device is established in full screen mode, press **Ctrl-F10** key combination to exit from the full screen mode.
- Additional command line switches can be used for KVM Vision Viewer:

<b>Command Line Switch</b>	<b>Description</b>
/ip <network address>	The IP address of the Minicom legacy KVMIP Device
/PORT <portnumber>	The http(s) port number for the login and the RFB port number. Default port 443.
/user <username>	Submits an User Name
/password <password>	Submits a Password (requires /user command line switch)
/https <yes/no>	Use https for the login
/autoadjust	Sends an auto adjust message just after the viewer startup
/mousesync	Sends an intelligent mouse sync command immediately after the viewer startup
/fullscreen <"yes"/"no">	Full screen mode
/TRUECOLOR <"yes"/"no">	True color mode
/SelEnc <0/1/2>	Sets the used encoding to Auto, Fix or Advanced
/EXCLUSIVE_PERM <"yes"/"no">	Sets the permission to enter Exclusive Access Mode

- KVM Vision Viewer Software currently doesn't support Linux operating systems. Linux users should manually login to the Minicom legacy KVMIP device in order to operate it from Minicom Centralized Access Management System.

**Configure the Access Service and Targets for Linux users**

1. Click the **Linux** tab of the Minicom legacy KVMIP Device Access Service.
2. Select the **URL** and type the following command: **http://%IP%**
3. Leave IP field empty. Configuration of the device IP address will be performed during creation of the target.



When creating a target based on the Minicom legacy KVMIP Device Access Service, verify that the Linux tab contains the correct IP address of the Minicom legacy KVMIP Device. This IP address is set during the configuration of the Windows tab of the Target.

