

Title: Adding VMware® Server 2 Access Service™ to Centralized Access Management System.

No: IPA31-3

Date: Friday, 16 October, 2009

SUMMARY:

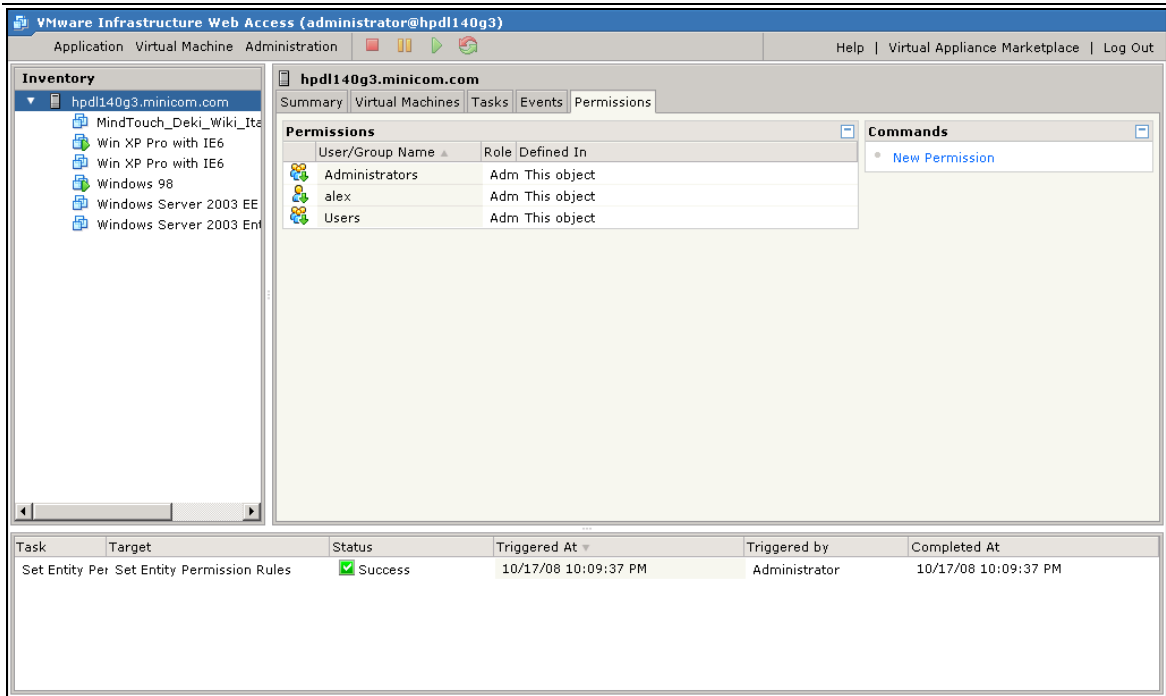
Centralized Access Management System has build-in support for VMware Server 1.x. Create a new Access Service to operate the virtual machines running on VMware Server 2.

MORE INFORMATION:

New VMware Remote Console (VMware VMRC) allows accessing the virtual machine consoles independent of Web-based management interface. In order to access VMware virtual machines, install VMware VMRC application from VMware Virtual Server web interface or download VMware VMRC application for Windows from Minicom web site: <http://support.minicom.com/KVMnet/Tools/VMwareVMRC.exe>

Create a New Access Service™ for VMware Server 2.

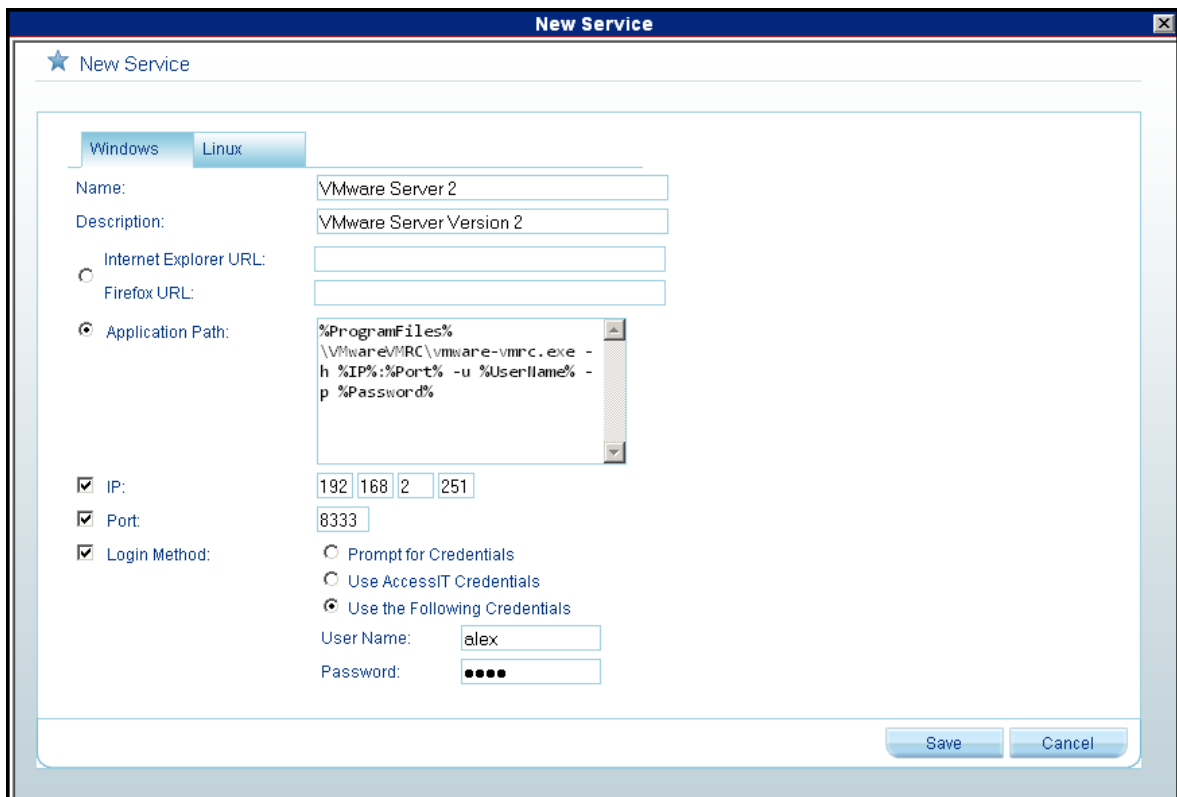
1. Click **New Service** button in **Settings > Access Services** page of the Centralized Access Management System.
2. On the Windows Tab give an explanatory name to the Access Service, e.g. VMware Server 2.
3. Provide description to the Access Service (optional).
4. Select the **Application Path** and type the following command in the corresponding field: **%ProgramFiles%\VMwareVMRC\vmware-vmrc.exe -h %IP%:%Port% -u %UserName% -p %Password%**
5. Select **IP** check box and type the IP address of the VMware Server 2.
6. Select **Port** check box and type the TCP/IP port number of the VMware Server 2. Use the port number you assigned during configuration of the VMware Server 2. Default TCP/IP port is 8333.
7. Select the **Login Method** check box and either select **Use KVM.net II/AccessIT Credentials** or **Use the Following Credentials**. If you selected **Use KVM.net II/AccessIT Credentials** all Centralized Access Management System users and their passwords must exist in VMware Server 2. If you selected **Use the Following Credentials**, type the User Name and Password in designated fields. This user name and password must exist in VMware Server 2. Add users to the VMware Server 2 on the Permissions tab.



8. Select the Linux Tab.

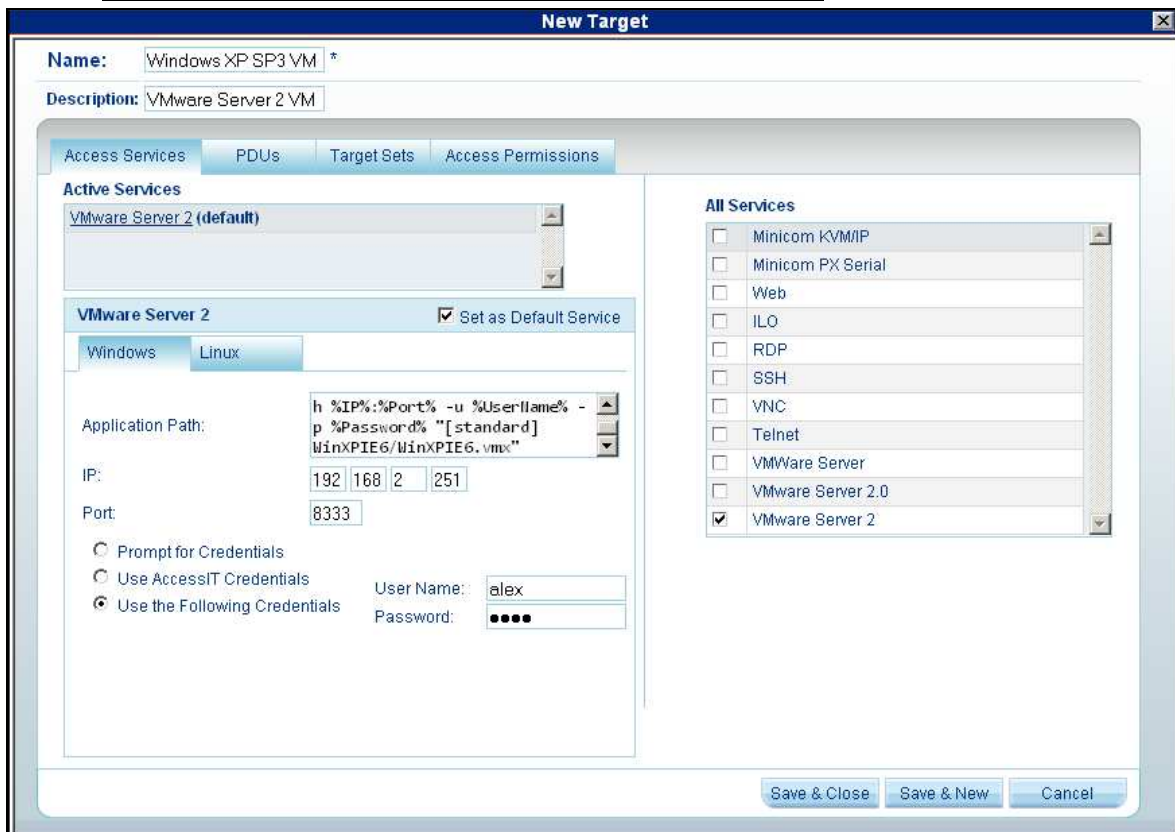
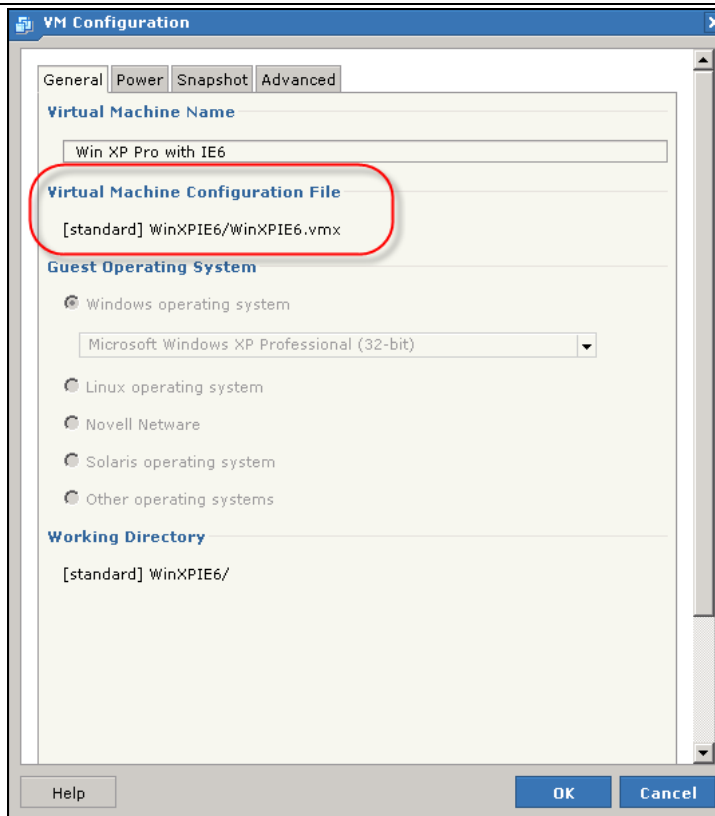
9. Select the **Application Path** and type the following command in the corresponding field: `/usr/bin/vmware-vmrc/vmware-vmrc -h %IP%:%Port% -u %UserName% -p %Password%`. Substitute the `/usr/bin/vmware-vmrc/` by the full path to the vmware-vmrc.

10. Press **Save** button.

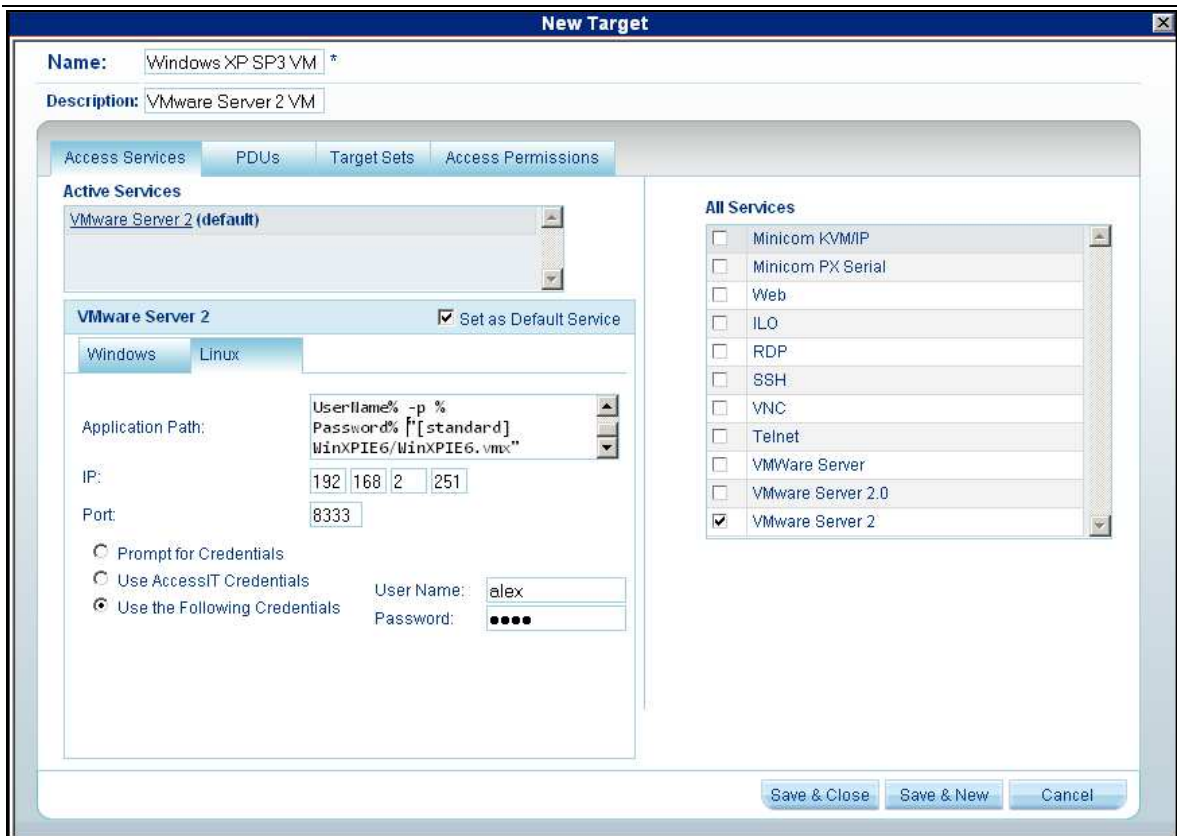


Create a virtual machine Target based on the VMware Server 2 Access Service.

1. In the **Management, Targets** page click **New Target** button.
2. Give a name for the virtual machine Target.
3. Provide description for the Target (optional).
4. In the **All Services** section select **VMware Server 2**.
5. In the **All Services** section unselect **Mincom KVM/IP**.
6. Set VMware Server 2 Access Service to be a **Default Access Service**.
7. In the Windows Tab in the end of the **vmware-vmrc.exe** command line in the **Application Path** field, type the Virtual Machine Configuration file as it appears in the Virtual Machine Configuration page of the VMware Server 2, e.g.
%ProgramFiles%\VMwareVMRC\vmware-vmrc.exe -h %IP%:%Port% -u %UserName% -p %Password% "[standard] WinXPIE6/WinXPIE6.vmx"



- In the Linux Tab in the end of the **vmware-vmrc** command line in the **Application Path** field, type the Virtual Machine Configuration file as it appears in the Virtual Machine Configuration page of the VMware Server 2, e.g.
/usr/bin/vmware-vmrc/vmware-vmrc -h %IP%:%Port% -u %UserName% -p %Password% "[standard] WinXPIE6/WinXPIE6.vmx"



9. Configure the **Target Sets** and **Access Permissions** assignments and press **Save & Close** or **Save & New** button.

In the **Access** Section click the virtual machine target. If “**Select file to launch**” dialog box appears, navigate to the location where the **vmware-vmrc.exe** application is installed and click **Open**.

Connection to virtual machine of the VMware Server 2 is established.



COMMENTS:

- If you installed VMware Virtual Machine Remote Console (VMRC) using the Internet Browser for Windows, you can find **vmware-vmrc.exe** in your Firefox profile in the **%USERPROFILE%\Application Data\Mozilla\Firefox\Profiles\jsitgndn.default\extensions\VMwareVMRC@vmware.com\plugins** folder, or for Internet Explorer in **%ProgramFiles%\Common Files\VMware\VMware Remote Console Plug-in** folder. These locations are subject to change, though it should be easy to find the console (just look for **vmware-vmrc.exe** on your system after installing the plug-in).
- If you installed the VMware Virtual Machine Remote Console (VMRC) using the Minicom package <http://support.minicom.com/KVMnet/Tools/VMwareVMRC.exe>, you can find **vmware-vmrc.exe** in **%ProgramFiles%\VMwareVMRC** folder.
- To ensure that users can power on the virtual machines, give users at least write, create and delete permissions to the Virtual Machines folder in VMware Server 2.
- The table below explains the command line switches used by **vmware-vmrc.exe** application:

Command Line Switch	Description
-h	VMware Server hostname or IP address including port number
-u	User Name
-p	Password
-X	Start in Full Screen mode (Must be placed before -h switch)
Datastore name and virtual machine configuration file	Datastore path should include datastore name in square brackets, i.e. "[standard] WinXPIE6/WinXPIE6.vmx"