

Title: Accessing Peppercon KVM/IP Devices from Centralized Access Management System.

No: IPA32-2

Date: Friday, 16 October, 2009

SUMMARY:

The specially created Access Service™ allows accessing and operating Peppercon KVM/IP devices – Lara, Lara Eco and other models, all from Centralized Access Management System interface. KVM Vision Viewer software is required for accessing and operating the Peppercon KVM/IP devices.

MORE INFORMATION:

To access and operate Peppercon KVM/IP devices (Lara, Lara Eco and other models) create new Access Service for Peppercon KVM/IP devices, install KVM Vision Viewer software on all client computers and create targets with correct access parameters.

***Note!** Finish configuration of the Peppercon KVM/IP devices prior to configuring the Centralized Access Management targets.*

Download KVM Vision Viewer version 2.2.9 from Minicom support web site: http://support.minicom.com/KVMnet/Tools/KVM_Vision_Viewer_2.2.9.exe and install it in all client computers.

Create New Access Service™ for Peppercon KVM/IP devices.

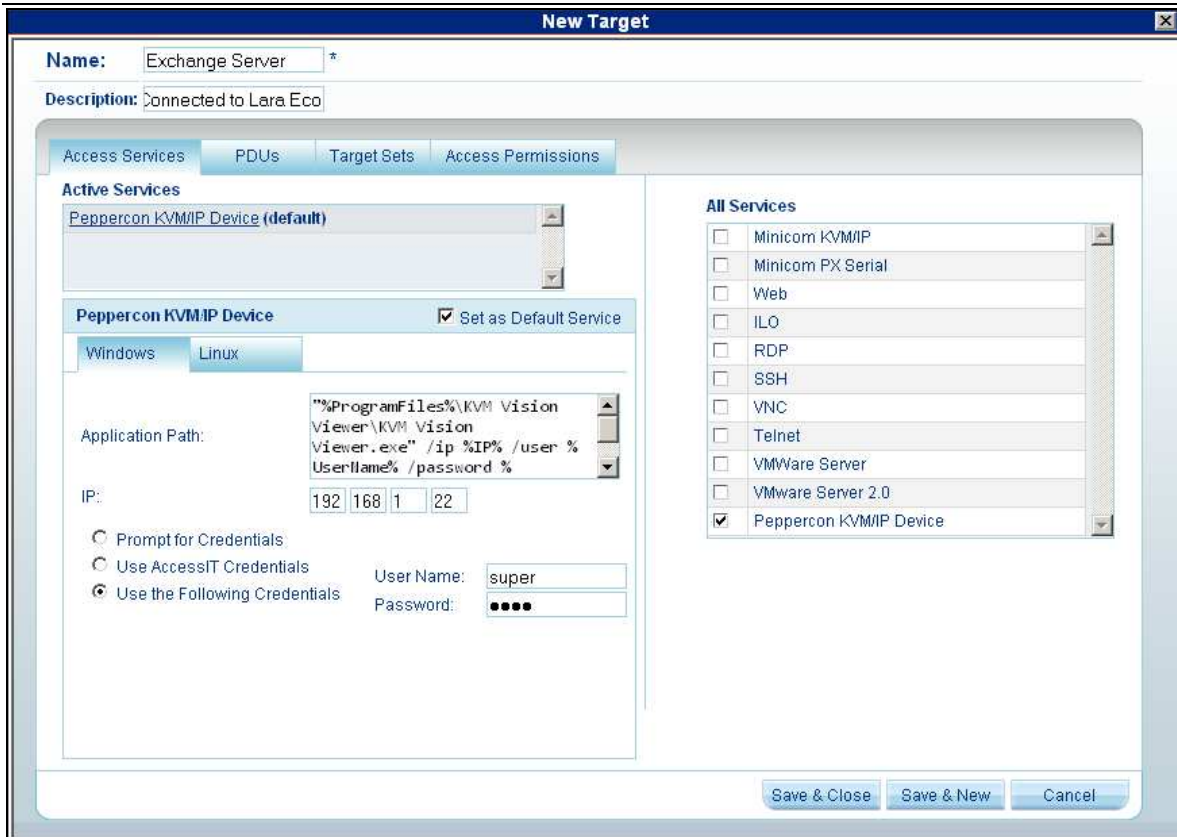
1. Click **New Service** button in **Settings > Access Services** page of the Centralized Access Management System.
2. In the Windows Tab give an explanatory name to the Access Service, e.g. Peppercon KVM/IP Device
3. Provide a description to the Access Service (optional).
4. Select **Application Path** and type the following command in the corresponding field: `"%ProgramFiles%\KVM Vision Viewer\KVM Vision Viewer.exe" /ip %IP% /user %UserName% /password %Password% /fullscreen "yes" /TRUECOLOR "yes"` where
 - a. %ProgramFiles% - variable indicating the location of the “Program Files” folder on the client system.
 - b. /fullscreen “yes” value instructs the remote console window to start in the full screen (“yes”) mode or in the window mode (“no”).
 - c. /TRUECOLOR “yes” value instructs the remote console window to start in the true color mode (“yes”) or in 256 colors mode (“no”).
5. Select **IP** check box. Leave the IP address fields empty. Configuration of the device IP address will be performed during creation of the target.
6. Select the **Login Method** check box and either select **Use KVM.net II/AccessIT Credentials** or **Use the Following Credentials**. If you selected **Use KVM.net II/AccessIT Credentials** all Centralized Access Management users and their

passwords must exist in the Peppercon KVM/IP device. If you selected **Use the Following Credentials**, type the User Name and Password in designated fields. This user name and password must exist in the Peppercon KVM/IP device.

7. Press **Save** button.

Create a Target based on the Peppercon KVM/IP Device Access Service.

1. In the **Management, Targets** page click **New Target** button.
2. Give a name to the Target.
3. Provide description for the Target (optional).
4. In the **All Services** section select **Peppercon KVM/IP Device**.
5. In the **All Services** section unselect **Mincom KVM/IP**.
6. Set Peppercon KVM/IP Device Access Service to be a **Default Access Service**.
7. Type the Peppercon KVM/IP device IP address in the IP fields.
8. Configure the **Login Method** if it differs from one configured in the Access Service.
9. Configure the **Target Sets** and **Access Permissions** assignments and press **Save & Close** or **Save & New** button.



In the **Access** Section select the target connected to Peppercon KVM/IP device. If the KVM Vision Viewer software is not installed in the default path, a “**Select file to launch**” dialog box will appear. Navigate to the location where the KVM Vision Viewer software is installed, select **KVM Vision Viewer.exe** and click **Open**.

Connection to Peppercon KVM/IP device is established.

COMMENTS:

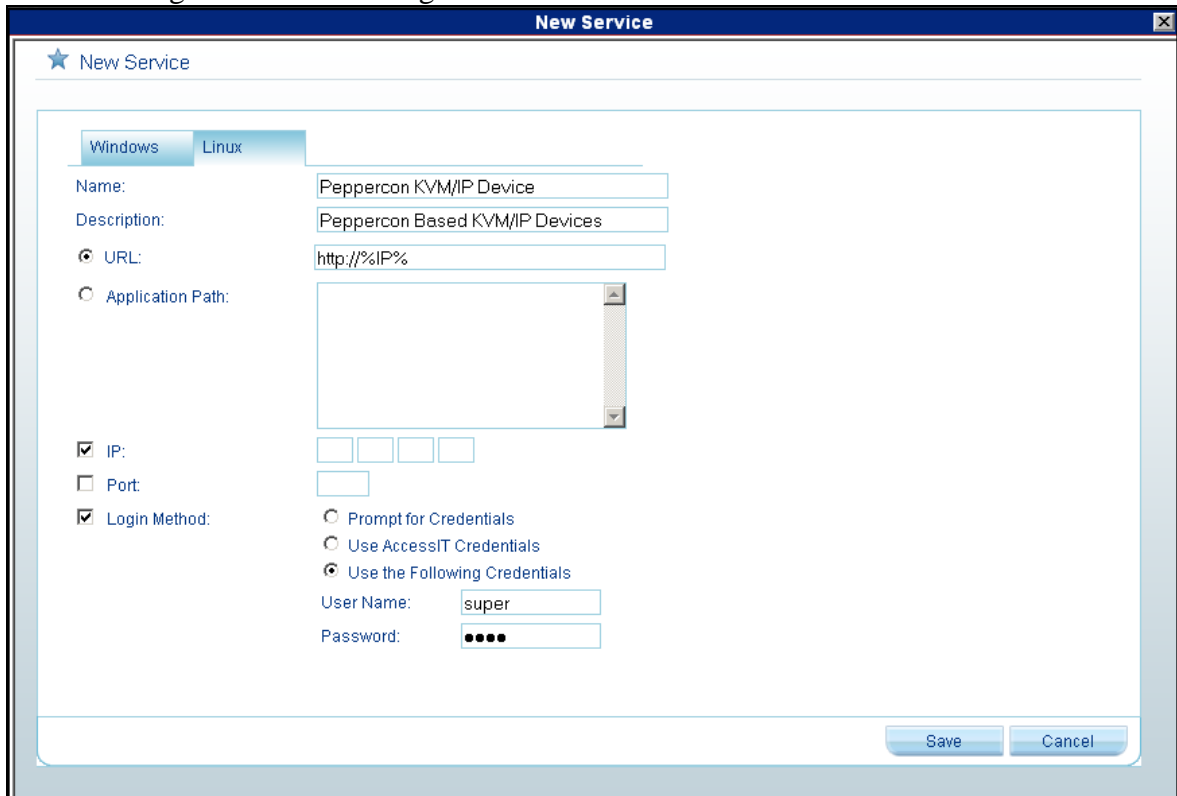
- If connection to Peppercon KVM/IP device is established in full screen mode, press **Ctrl-F10** key combination to exit from the full screen mode.
- Additional command line switches can be used for KVM Vision Viewer:

Command Line Switch	Description
/ip <network address>	The IP address of the Peppercon KVM/IP Device
/PORT <portnumber>	The http(s) port number for the login and the RFB port number. Default port 443.
/user <username>	Submits an User Name
/password <password>	Submits a Password (requires /user command line switch)
/https <yes/no>	Use https for the login
/autoadjust	Sends an auto adjust command just after the viewer startup
/mousesync	Sends an intelligent mouse sync command immediately after the viewer startup
/fullscreen <"yes"/"no">	Full screen mode
/TRUECOLOR <"yes"/"no">	True color mode
/SelEnc <0/1/2>	Sets the encoding to Auto, Fix or Advanced
/EXCLUSIVE_PERM <"yes"/"no">	Sets the permission to enter Exclusive Access Mode

- KVM Vision Viewer Software currently doesn't support Linux operating systems. Linux users should manually login to the Peppercon KVM/IP device in order to operate it from Minicom Centralized Access Management System.

Configure the Access Service and Targets for Linux users

1. Click the **Linux** tab of the Peppercon KVM/IP Device Access Service.
2. Select the **URL** and type the following command: **http://%IP%**
3. Leave IP field empty. Configuration of the device IP address will be performed during creation of the target.



When creating a target based on the Peppercon KVM/IP Device Access Service, verify that the Linux tab contains the correct IP address of the Peppercon KVM/IP Device. This IP address is set during the configuration of the Windows tab of the Target.

