

Title: Accessing Tripp Lite IP Remote Access Units Model # B050-000 from KVM.net® II.

No: IPA33-1

Date: Sunday, 19 October, 2008

SUMMARY:

The specially created Access Service™ allows accessing and operating Tripp Lite IP Remote Access Units Model # B050-000 from KVM.net® II interface. KVM Vision Viewer software is required for accessing and operating the Tripp Lite IP Remote Access Units.

MORE INFORMATION:

To access and operate Tripp Lite IP Remote Access Units Model # B050-000, create new Access Service for Tripp Lite IP Remote Access Units, install KVM Vision Viewer software on all client computers and create targets with correct access parameters.

Note! Finish configuration of the Tripp Lite IP Remote Access Units prior to configuring the KVM.net II targets.

Download KVM Vision Viewer version 2.2.9 from Minicom support web site:
http://support.minicom.com/KVMnet/Tools/KVM_Vision_Viewer_2.2.9.exe and install it in all client computers.

Create New Access Service™ for Tripp Lite IP Remote Access Units.

1. Click **New Service** button in **Settings > Access Services** page of the KVM.net II.
2. Give an explanatory name to the Access Service, e.g. Tripp Lite IP Remote Access Unit
3. Provide a description to the Access Service (optional).
4. Select **Application Path** and type the following command in the corresponding field: "%ProgramFiles%\KVM Vision Viewer\KVM Vision Viewer.exe" /ip %IP% /user %UserName% /password %Password% /fullscreen "yes" /TRUECOLOR "yes" where
 - %ProgramFiles% - variable indicating the location of the "Program Files" folder on the client system.
 - /fullscreen "yes" value instructs the remote console window to start in the full screen ("yes") mode or in the window mode ("no").
 - /TRUECOLOR "yes" value instructs the remote console window to start in the true color mode ("yes") or in 256 colors mode ("no")
5. Select **IP** check box. Leave the IP address fields empty. Configuration of the device IP address will be performed during creation of the target.
6. Select the **Login Method** check box and either select **Use KVM.net Credentials** or **Use the Following Credentials**. If you selected **Use KVM.net Credentials** all KVM.net II users and their passwords must exist in the Tripp Lite IP Remote Access Unit. If you selected **Use the Following Credentials**, type the User Name

and Password in designated fields. This user name and password must exist in the Tripp Lite IP Remote Access Unit.

7. Press **Save** button.

New Service

★ New Service

Name:

Description:

URL:

Application Path:

```
""ProgramFiles%\KVM Vision Viewer\KVM Vision Viewer.exe" /ip %IP% /user %Username% /password %Password% /fullscreen "yes" /TRUECOLOR "yes"
```

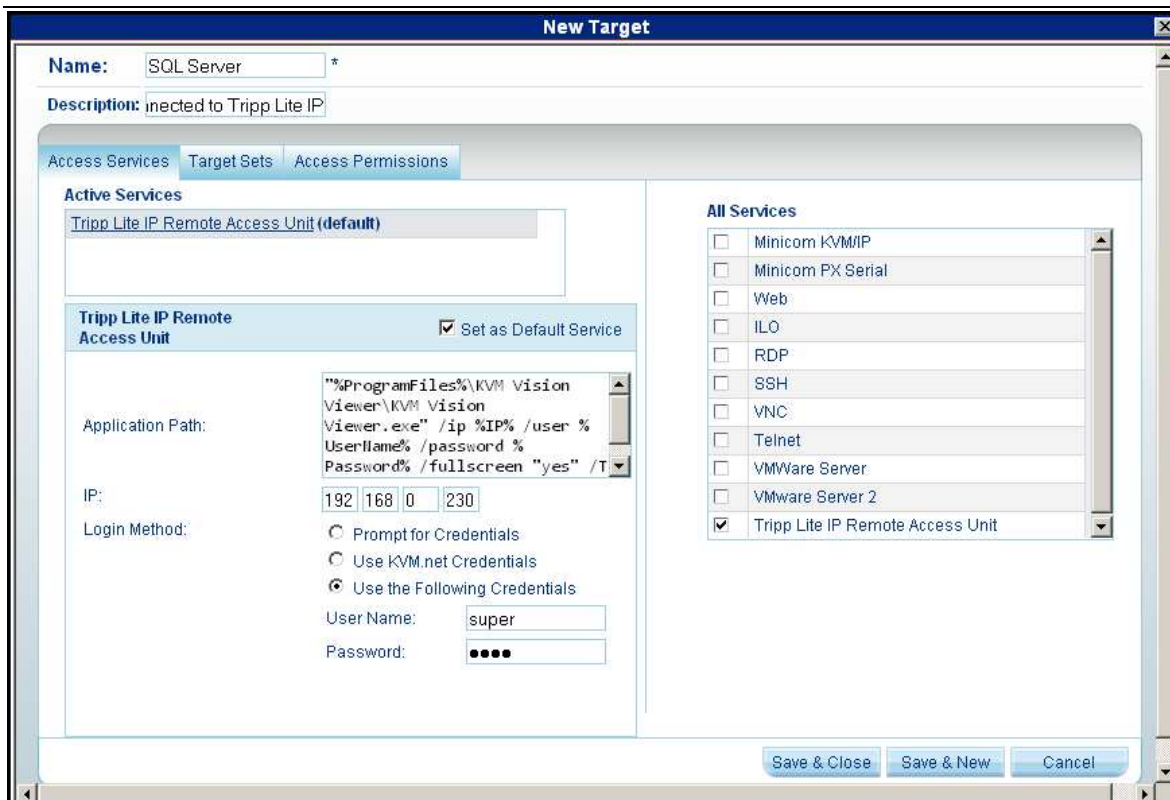
IP:

Port:

Login Method: Prompt for Credentials
 Use KVM.net Credentials
 Use the Following Credentials
 User Name:
 Password:

Create a Target based on the Tripp Lite IP Remote Access Unit Access Service.

1. In the **Management, Targets** page click **New Target** button.
2. Give a name to the Target.
3. Provide description for the Target (optional).
4. In the **All Services** section select **Tripp Lite IP Remote Access Unit**.
5. In the **All Services** section unselect **Mincom KVM/IP**.
6. Set Tripp Lite IP Remote Access Unit Access Service to be a **Default Access Service**.
7. Type the Tripp Lite IP Remote Access Unit IP address in the IP fields.
8. Configure the **Login Method** if it differs from one configured in the Access Service.
9. Configure the **Target Sets** and **Access Permissions** assignments and press **Save & Close** or **Save & New** button.



In the KVM.net II **Access** Section select the target connected to Tripp Lite IP Remote Access Unit. If the KVM Vision Viewer software is not installed in the default path, a “**Select file to launch**” dialog box will appear. Navigate to the location where the KVM Vision Viewer software is installed, select **KVM Vision Viewer.exe** and click **Open**. Connection to Tripp Lite IP Remote Access Unit is established.

COMMENTS:

- If connection to Tripp Lite IP Remote Access Unit is established in full screen mode, press **Ctrl-F10** key combination to exit from the full screen mode.
- Additional command line switches can be used for KVM Vision Viewer:

Command Line Switch	Description
/ip <network address>	The IP address of the Tripp Lite IP Remote Access Unit
/PORT <portnumber>	The http(s) port number for the login and the RFB port number. Default port 443.
/user <username>	Submits an User Name
/password <password>	Submits a Password (requires /user command line switch)
/https <yes/no>	Use https for the login
/autoadjust	Sends an auto adjust command just after the viewer startup
/mousesync	Sends an intelligent mouse sync command immediately after the viewer startup
/fullscreen <"yes"/"no">	Full screen mode
/TRUECOLOR <"yes"/"no">	True color mode
/SelEnc <0/1/2>	Sets the encoding to Auto, Fix or Advanced
/EXCLUSIVE_PERM <"yes"/"no">	Sets the permission to enter Exclusive Access Mode