

## Title: Accessing Tripp Lite IP Remote Access Units Model # B050-000 from Centralized Access Management.

**No: IPA33-2**

**Date: Thursday, 08 October, 2009**

### **SUMMARY:**

The specially created Access Service™ allows accessing and operating Tripp Lite IP Remote Access Units Model # B050-000 from Centralized Access Management interface. KVM Vision Viewer software is required for accessing and operating the Tripp Lite IP Remote Access Units.

### **MORE INFORMATION:**

To access and operate Tripp Lite IP Remote Access Units Model # B050-000, create new Access Service for Tripp Lite IP Remote Access Units, install KVM Vision Viewer software on all client computers and create targets with correct access parameters.

*Note! Finish configuration of the Tripp Lite IP Remote Access Units prior to configuring the Centralized Access Management targets.*

Download KVM Vision Viewer version 2.2.9 from Minicom support web site: [http://support.minicom.com/KVMnet/Tools/KVM\\_Vision\\_Viewer\\_2.2.9.exe](http://support.minicom.com/KVMnet/Tools/KVM_Vision_Viewer_2.2.9.exe) and install it in all client computers.

Create New Access Service™ for Tripp Lite IP Remote Access Units.

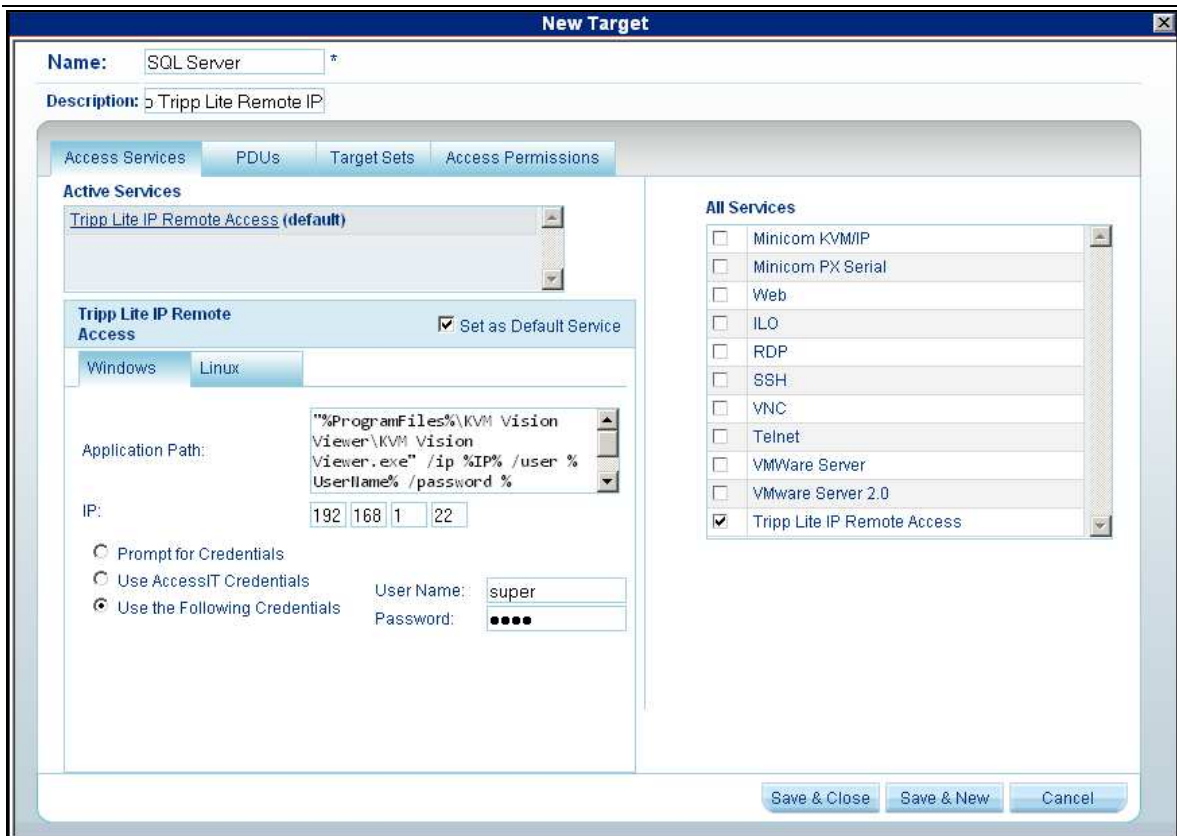
1. Click **New Service** button in **Settings > Access Services** page of the Centralized Access Management.
2. Give an explanatory name to the Access Service, e.g. Tripp Lite IP Remote Access
3. Provide a description to the Access Service (optional).
4. Select **Application Path** and type the following command in the corresponding field: `"%ProgramFiles%\KVM Vision Viewer\KVM Vision Viewer.exe" /ip %IP% /user %UserName% /password %Password% /fullscreen "yes" /TRUECOLOR "yes"` where
  - a. %ProgramFiles% - variable indicating the location of the "Program Files" folder on the client system.
  - b. /fullscreen "yes" value instructs the remote console window to start in the full screen ("yes") mode or in the window mode ("no").
  - c. /TRUECOLOR "yes" value instructs the remote console window to start in the true color mode ("yes") or in 256 colors mode ("no")
5. Select **IP** check box. Leave the IP address fields empty. Configuration of the device IP address will be performed during creation of the target.
6. Select the **Login Method** check box and either select **Use KVM.net II/AccessIT Credentials** or **Use the Following Credentials**. If you selected **Use KVM.net II/AccessIT Credentials** all Centralized Access Management users and their

passwords must exist in the Tripp Lite IP Remote Access Unit. If you selected **Use the Following Credentials**, type the User Name and Password in designated fields. This user name and password must exist in the Tripp Lite IP Remote Access Unit.

7. Press **Save** button.

Create a Target based on the Tripp Lite IP Remote Access Unit Access Service.

1. In the **Management, Targets** page click **New Target** button.
2. Give a name to the Target.
3. Provide description for the Target (optional).
4. In the **All Services** section select **Tripp Lite IP Remote Access Unit**.
5. In the **All Services** section unselect **Mincom KVM/IP**.
6. Set Tripp Lite IP Remote Access Unit Access Service to be a **Default Access Service**.
7. Type the Tripp Lite IP Remote Access Unit IP address in the IP fields.
8. Configure the **Login Method** if it differs from one configured in the Access Service.
9. Configure the **Target Sets** and **Access Permissions** assignments and press **Save & Close** or **Save & New** button.



In Centralized Access Management **Access** Section select the target connected to Tripp Lite IP Remote Access Unit. If the KVM Vision Viewer software is not installed in the default path, a “**Select file to launch**” dialog box will appear. Navigate to the location where the KVM Vision Viewer software is installed, select **KVM Vision Viewer.exe** and click **Open**.

Connection to Tripp Lite IP Remote Access Unit is established.

## **COMMENTS:**

- If connection to Tripp Lite IP Remote Access Unit is established in full screen mode, press **Ctrl-F10** key combination to exit from the full screen mode.
- Additional command line switches can be used for KVM Vision Viewer:

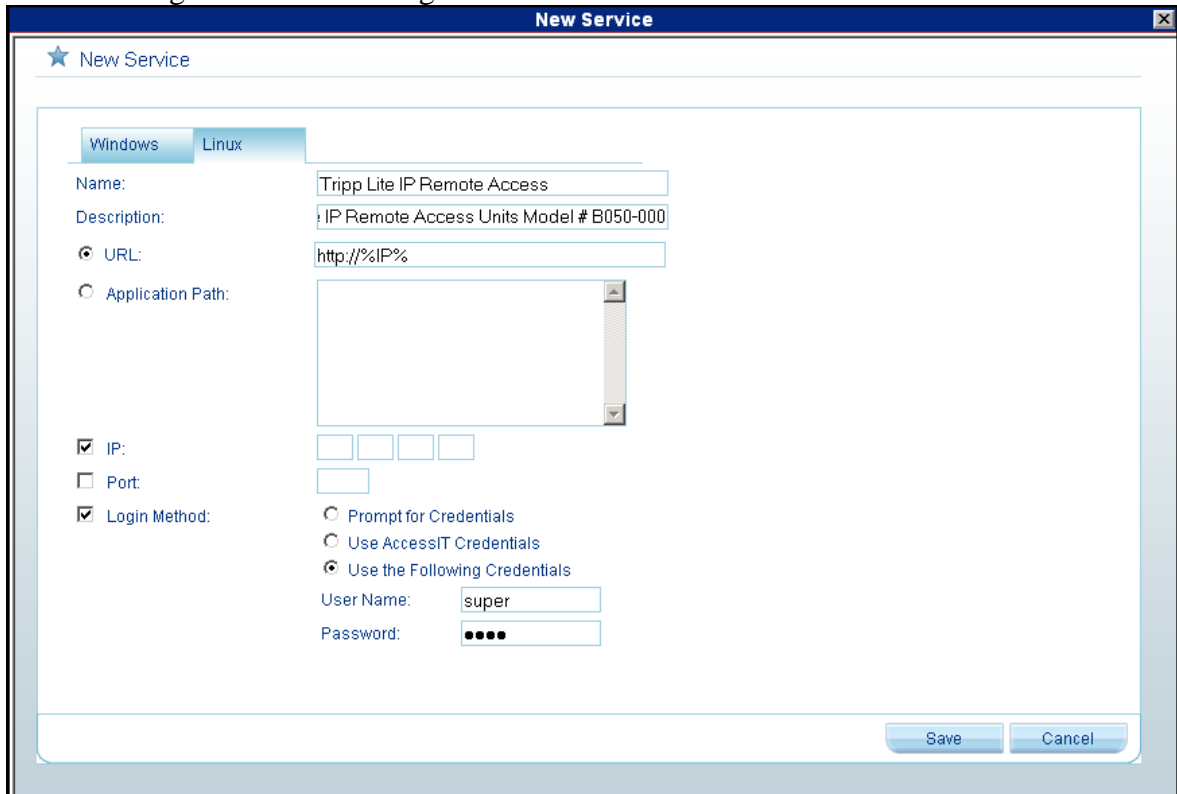
<b>Command Line Switch</b>	<b>Description</b>
<code>/ip &lt;network address&gt;</code>	The IP address of the Tripp Lite IP Remote Access Unit
<code>/PORT &lt;portnumber&gt;</code>	The http(s) port number for the login and the RFB port number. Default port 443.
<code>/user &lt;username&gt;</code>	Submits an User Name
<code>/password &lt;password&gt;</code>	Submits a Password (requires /user command line switch)
<code>/https &lt;yes/no&gt;</code>	Use https for the login
<code>/autoadjust</code>	Sends an auto adjust command just after the viewer startup
<code>/mousesync</code>	Sends an intelligent mouse sync command immediately after the viewer startup
<code>/fullscreen &lt;"yes"/"no"&gt;</code>	Full screen mode
<code>/TRUECOLOR &lt;"yes"/"no"&gt;</code>	True color mode
<code>/SelEnc &lt;0/1/2&gt;</code>	Sets the encoding to Auto, Fix or Advanced
<code>/EXCLUSIVE_PERM</code>	Sets the permission to enter Exclusive Access Mode

<"yes"/"no">

- KVM Vision Viewer Software currently doesn't support Linux operating systems. Linux users should manually login to the Tripp Lite IP Remote Access Unit in order to operate it from Minicom Centralized Access Management System.

**Configure the Access Service and Targets for Linux users**

1. Click the **Linux** tab of the Tripp Lite IP Remote Access unit Access Service.
2. Select the **URL** and type the following command: **http://%IP%**
3. Leave IP field empty. Configuration of the device IP address will be performed during creation of the target.



When creating a target based on the Tripp Lite IP Remote Access unit Access Service, verify that the Linux tab contains the correct IP address of the Tripp Lite IP Remote Access Unit. This IP address is set during the configuration of the Windows tab of the Target.

