

Title: Accessing Belkin OmniView Remote IP Manager F1DE101H from Centralized Access Management.

No: IPA34-2

Date: Thursday, 08 October, 2009

SUMMARY:

The specially created Access Service™ allows accessing and operating Belkin OmniView Remote IP Manager F1DE101H from Centralized Access Management interface. KVM Vision Viewer software is required for accessing and operating the Belkin OmniView Remote IP Manager Units.

MORE INFORMATION:

To access and operate Belkin OmniView Remote IP Manager F1DE101H units, create new Access Service for Belkin OmniView Remote IP Manager Units, install KVM Vision Viewer software on all client computers and create targets with correct access parameters.

Note! Finish configuration of the Belkin OmniView Remote IP Manager Units prior to configuring the Centralized Access Management targets.

Download KVM Vision Viewer version 2.2.9 from Minicom support web site: http://support.minicom.com/KVMnet/Tools/KVM_Vision_Viewer_2.2.9.exe and install it in all client computers.

Create New Access Service™ for Belkin OmniView Remote IP Manager Units.

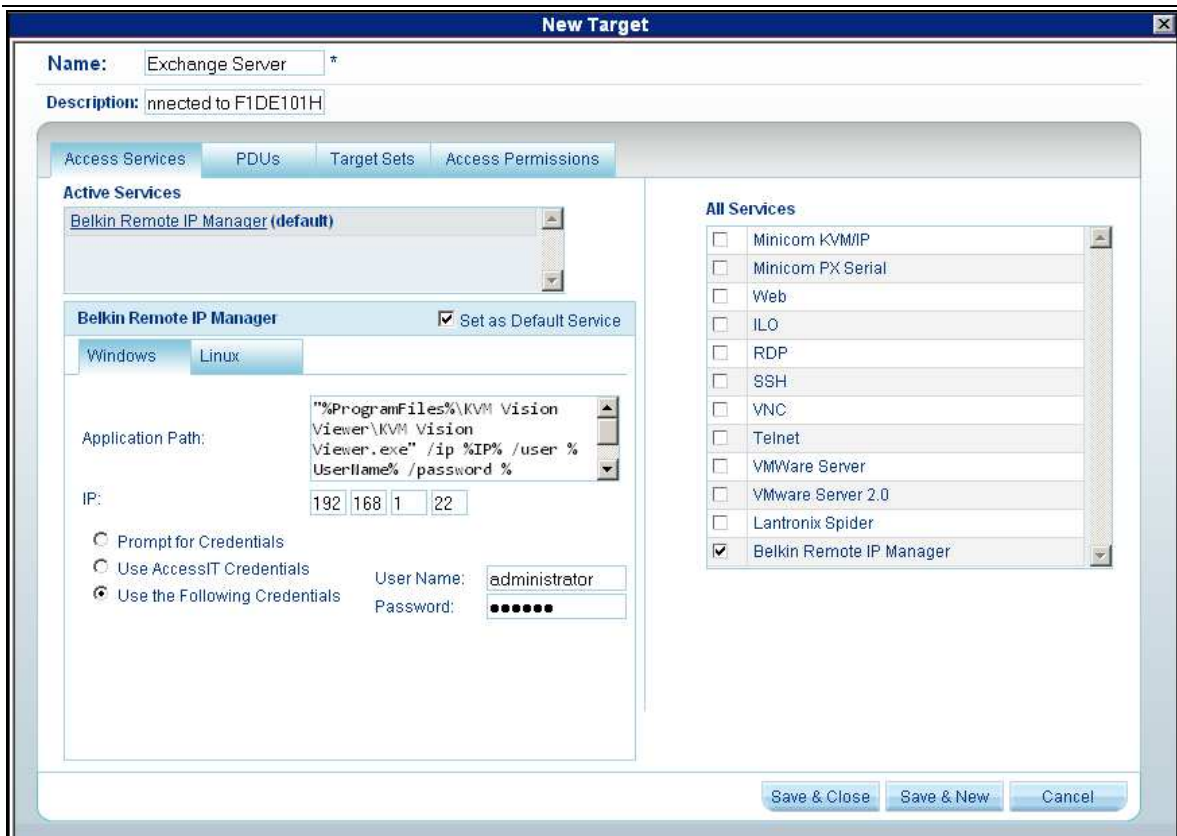
1. Click **New Service** button in **Settings > Access Services** page of the Centralized Access Management.
2. Give an explanatory name to the Access Service, e.g. Belkin Remote IP Manager
3. Provide a description to the Access Service (optional).
4. Select **Application Path** and type the following command in the corresponding field: "%ProgramFiles%\KVM Vision Viewer\KVM Vision Viewer.exe" /ip %IP% /user %UserName% /password %Password% /fullscreen "yes" /TRUECOLOR "yes" where
 - a. %ProgramFiles% - variable indicating the location of the "Program Files" folder on the client system.
 - b. /fullscreen "yes" value instructs the remote console window to start in the full screen ("yes") mode or in the window mode ("no").
 - c. /TRUECOLOR "yes" value instructs the remote console window to start in the true color mode ("yes") or in 256 colors mode ("no")
5. Select **IP** check box. Leave the IP address fields empty. Configuration of the device IP address will be performed during creation of the target.
6. Select the **Login Method** check box and either select **Use KVM.net II/AccessIT Credentials** or **Use the Following Credentials**. If you selected **Use KVM.net/AccessIT Credentials** all Centralized Access Management users and their passwords must exist in the Belkin OmniView Remote IP Manager. If you

selected **Use the Following Credentials**, type the User Name and Password in designated fields. This user name and password must exist in the Belkin OmniView Remote IP Manager.

7. Press **Save** button.

Create a Target based on the Belkin OmniView Remote IP Manager Access Service.

1. In the **Management, Targets** page click **New Target** button.
2. Give a name to the Target.
3. Provide description for the Target (optional).
4. In the **All Services** section select **Belkin OmniView Remote IP Manager**.
5. In the **All Services** section unselect **Mincom KVM/IP**.
6. Set Belkin OmniView Remote IP Manager Access Service to be a **Default Access Service**.
7. Type the Belkin OmniView Remote IP Manager IP address in the IP fields.
8. Configure the **Login Method** if it differs from one configured in the Access Service.
9. Configure the **Target Sets** and **Access Permissions** assignments and press **Save & Close** or **Save & New** button.



In the Centralized Access Management **Access** Section select the target connected to Belkin OmniView Remote IP Manager. If the KVM Vision Viewer software is not installed in the default path, a “**Select file to launch**” dialog box will appear. Navigate to the location where the KVM Vision Viewer software is installed, select **KVM Vision Viewer.exe** and click **Open**.

Connection to Belkin OmniView Remote IP Manager is established.

COMMENTS:

- If connection to Belkin OmniView Remote IP Manager is established in full screen mode, press **Ctrl-F10** key combination to exit from the full screen mode.
- Additional command line switches can be used for KVM Vision Viewer:

Command Line Switch	Description
/ip <network address>	The IP address of the Belkin OmniView Remote IP Manager
/PORT <portnumber>	The http(s) port number for the login and the RFB port number. Default port 443.
/user <username>	Submits an User Name
/password <password>	Submits a Password (requires /user command line switch)
/https <yes/no>	Use https for the login
/autoadjust	Sends an auto adjust command just after the viewer startup
/mousesync	Sends an intelligent mouse sync command immediately after the viewer startup
/fullscreen <"yes"/"no">	Full screen mode
/TRUECOLOR <"yes"/"no">	True color mode
/SelEnc <0/1/2>	Sets the encoding to Auto, Fix or Advanced
/EXCLUSIVE_PERM <"yes"/"no">	Sets the permission to enter Exclusive Access Mode

- KVM Vision Viewer Software currently doesn't support Linux operating systems. Linux users should manually login to the Belkin OmniView Remote IP Manager F1DE101H unit in order to operate it from Minicom Centralized Access Management System.

Configure the Access Service and Targets for Linux users

1. Click the **Linux** tab of the Belkin Remote IP Manager Access Service.
2. Select the **URL** and type the following command: **http://%IP%**
3. Leave IP field empty. Configuration of the device IP address will be performed during creation of the target.

The screenshot shows the 'New Service' configuration window. The 'Linux' tab is active. The 'Name' field is 'Belkin Remote IP Manager' and the 'Description' is 'OmniView Remote IP Manager F1DE101H'. The 'URL' field is selected and contains 'http://%IP%'. The 'Application Path' field is empty. The 'IP' checkbox is checked, and the 'Port' checkbox is unchecked. The 'Login Method' section has 'Use the Following Credentials' selected, with 'User Name' set to 'administrator' and 'Password' masked with dots. 'Save' and 'Cancel' buttons are at the bottom right.

When creating a target based on the Belkin Remote IP Manager Access Service, verify that the Linux tab contains the correct IP address of the Belkin OmniView Remote IP Manager F1DE101H unit. This IP address is set during the configuration of the Windows tab of the Target.

