

Title: Accessing AdderLink IPEPS from KVM.net® II.

No: IPA35-1

Date: Sunday, 02 November, 2008

SUMMARY:

The specially created Access Service™ allows accessing and operating AdderLink IPEPS from KVM.net® II interface. RealVNC Enterprise Edition Viewer software is required for accessing and operating the AdderLink IPEPS Units.

MORE INFORMATION:

To access and operate the AdderLink IPEPS, create a new Access Service for AdderLink IPEPS, copy RealVNC Enterprise Edition Viewer software to all client computers and create targets with correct access permissions.

Note! Finish configuration of the AdderLink IPEPS Units prior to configuring the KVM.net II targets.

Download RealVNC Enterprise Edition Viewer from RealVNC web site:
<http://www.realvnc.com/cgi-bin/download.cgi> or from AdderLink IPEPS device and copy it to all client computers.

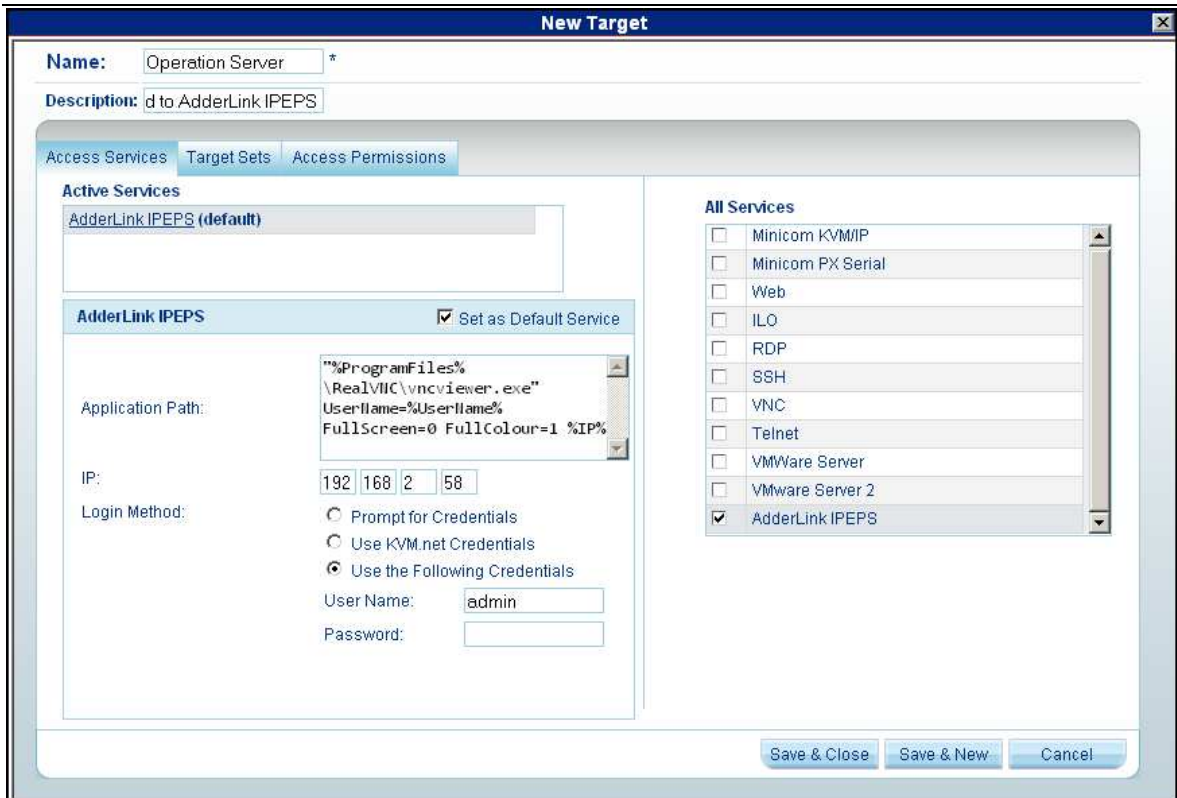
Create a New Access Service™ for AdderLink IPEPS Units.

1. Click **New Service** button in **Settings > Access Services** page of the KVM.net II.
2. Give an explanatory name to the Access Service, e.g. AdderLink IPEPS.
3. Provide a description to the Access Service (optional).
4. Select **Application Path** and type the following command in the corresponding field: **"%ProgramFiles%\RealVNC\vncviewer.exe"**
UserName=%UserName% FullScreen=0 FullColour=1 %IP% where
 - %ProgramFiles% - variable indicating the location of the "Program Files" folder on the client system.
 - FullScreen=1 value instructs the remote console window to start in the full screen ("1") mode or in the window mode ("0").
 - FullColour=1 value instructs the remote console window to start in the Full Color ("1") mode or in reduced color mode ("0"). If Full Color mode is selected then VNC Viewer will attempt to render colors as accurately as possible. Otherwise, a reduced number of colors will be used, to limit the required network bandwidth. The reduced color mode to use is determined by the LowColourLevel setting.
 - i. Medium (256 colors): LowColourLevel=2
 - ii. Low (64 colors): LowColourLevel=1
 - iii. Very Low (8 colors): LowColourLevel=0
5. Select **IP** check box. Leave the IP address fields empty. Configuration of the device IP address will be performed during creation of the target.

6. Select the **Login Method** check box and either select **Use KVM.net Credentials** or **Use the Following Credentials**. If you selected **Use KVM.net Credentials** all KVM.net II users must exist in the AdderLink IPEPS Unit. If you selected **Use the Following Credentials**, type the User Name in “User Name” field. This user name must exist in the AdderLink IPEPS Unit.
7. Press **Save** button.

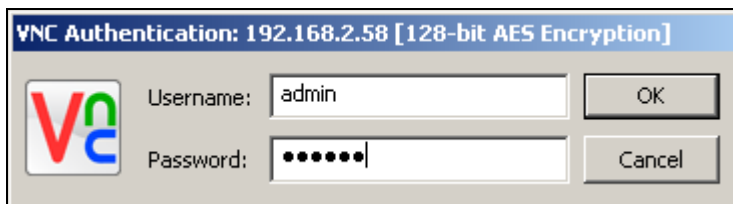
Create a Target based on the AdderLink IPEPS Access Service.

1. In the **Management, Targets** page click **New Target** button.
2. Give a name to the Target.
3. Provide description for the Target (optional).
4. In the **All Services** section select **AdderLink IPEPS**.
5. In the **All Services** section unselect **Mincom KVM/IP**.
6. Set AdderLink IPEPS Access Service to be a **Default Access Service**.
7. Type the AdderLink IPEPS IP address in the IP fields.
8. Configure the **Login Method** if it differs from one configured in the Access Service.
9. Configure the **Target Sets** and **Access Permissions** assignments and press **Save & Close** or **Save & New** button.

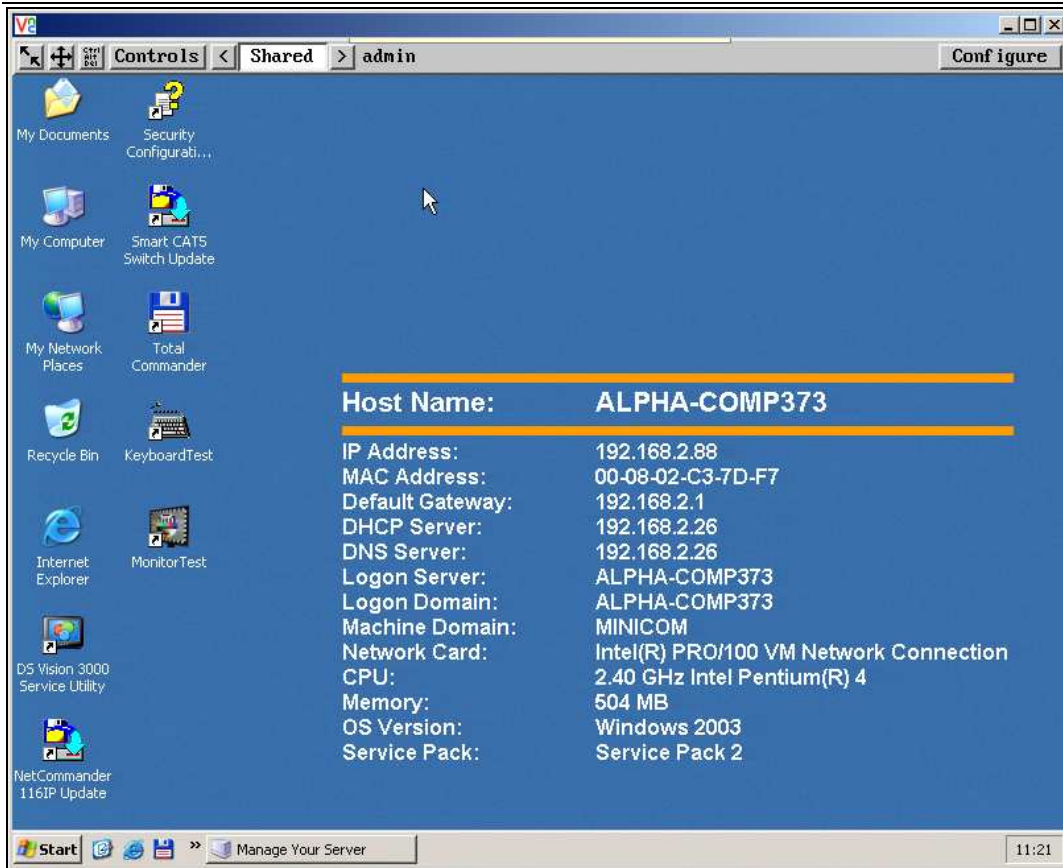


In the KVM.net II **Access** Section click the name of the target connected to AdderLink IPEPS Unit. If the RealVNC Enterprise Edition Viewer software is not installed in the default path, a **“Select file to launch”** dialog box will appear. Navigate to the location where the RealVNC Enterprise Edition Viewer software is located, select **vncviewer.exe** and click **Open**.

Type your password for the AdderLink IPEPS Unit. This password must correspond to the User Name configured during the creation of the Access Service.



Connection to AdderLink IPEPS Unit is established.



COMMENTS:

Ensure that KVM.net II users exist on the AdderLink IPEPS Unit. To configure the User Names and Passwords of the AdderLink IPEPS Unit, click **Configure** button on the right side of the menu bar and select **User Accounts**. Configure the User Names and Passwords to be the same as those in the KVM.net II.

