

## Title: Centralized Access Management System Network Ports

**No: IPA36-2**

**Date: Thursday, 08 October, 2009**

### **SUMMARY:**

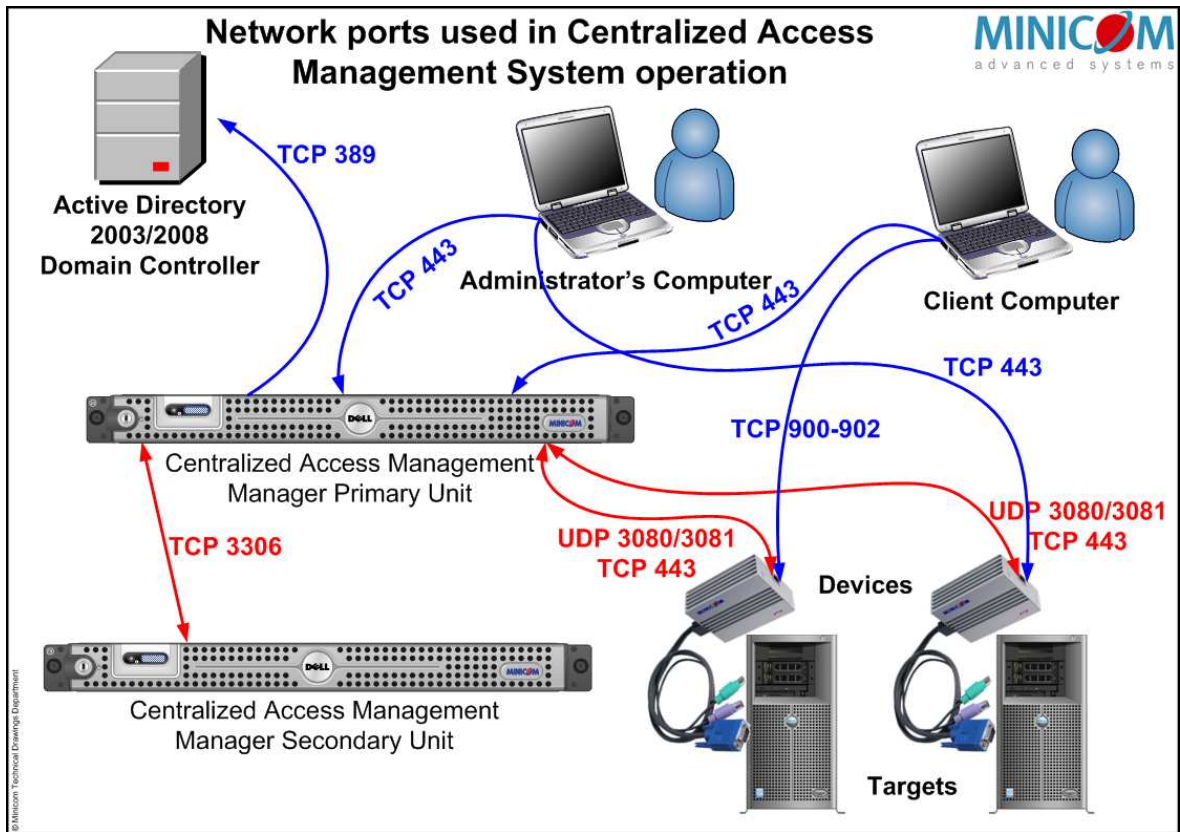
A number of TCP and UDP network ports used for day to day operation and management of Centralized Access Management system (KVM.net II and AccessIT). Understanding the direction of communication and list of ports is crucial for operation, configuration and daily maintenance of Centralized Access Management system.

### **MORE INFORMATION:**

Centralized Access Management is a complex network system which uses many network protocols for its operation. Listed below are network protocols and their corresponding network ports used Centralized Access Management system operation and maintenance.

<b>Port Number</b>	<b>Direction</b>	<b>Description</b>
UDP 3080	Bidirectional between Centralized Access Management and devices	Used for device discovery in broadcast (Auto Discovery) or unicast (Manual Manager IP) modes every time the device or Manager boots.
UDP 3081	Unidirectional from Manager to devices	Used for device discovery if port 3080 doesn't work. Device answers on port 3080 only.
TCP 443	Bidirectional between Centralized Access Management System and devices	Used for status updates, device configurations, upgrades and other communication.
TCP 443	Unidirectional from Client to Manager	Used for Centralized Access Management web interface login and operation.
TCP 443	Unidirectional from Administrator to device	Used for login to device config page for initial KVMIP device configuration
TCP 900-902 (configurable)	Unidirectional from Client to device	Used for Remote Client session (Video, keyboard, mouse control of the target)
TCP 389	Unidirectional from Manager to LDAP	Used for importing the users from LDAP server and for password authentication during the user login to Centralized Access Management Manager.
TCP 3306	Bidirectional between Centralized Access Management Primary and Secondary units	Used for database synchronization and replication when Centralized Access Management system operated in Replication mode.
TCP 22	Unidirectional from Administrator to Manager	Used by Administrator for system troubleshooting and debugging (PuTTY - SSH, WinSCP - SFTP)

See the diagram below for graphical representations of network ports and communication direction in Centralized Access Management system.



**COMMENTS:**

Other network protocols may be used by the system as well, depending on Centralized Access Management Manager and devices' configuration.

Protocols that may be used are DHCP (UDP 67, 68) for obtaining dynamic network address from DHCP server for devices, DNS (TCP 53) for name resolving to Centralized Access Management Manager, ping (ICMP) and other network protocols.