

Title: Accessing Lantronix SecureLinx Spider from KVM.net® II.

No: IPA37-1

Date: Monday, 03 November, 2008

SUMMARY:

The specially created Access Service™ allows accessing and operating Lantronix SecureLinx Spider from KVM.net® II interface. Lantronix SpiderView Software is required for accessing and operating the Lantronix SecureLinx Spider Units.

MORE INFORMATION:

To access and operate Lantronix SecureLinx Spider units, create a new Access Service for Lantronix SecureLinx Spider, install Lantronix SpiderView Software on all client computers and create targets with correct access parameters.

Note! Finish configuration of the Lantronix SecureLinx Spider Units prior to configuring the KVM.net II targets.

Download Lantronix SpiderView Software from Lantronix web site:
<http://www.lantronix.com/support/downloads.html#kvm> and install it on all client computers.

Create New Access Service™ for Lantronix SecureLinx Spider Units.

1. Click **New Service** button in **Settings > Access Services** page of the KVM.net II.
2. Give an explanatory name to the Access Service, e.g. Lantronix Spider
3. Provide a description to the Access Service (optional).
4. Select **Application Path** and type the following command in the corresponding field: "**%ProgramFiles%\Lantronix\SecureLinx Spider View\SecureLinx Spider View.exe**" /ip %IP% /user %UserName% /password %Password% /fullscreen "yes" /TRUECOLOR "yes" where
 - %ProgramFiles% - variable indicating the location of the "Program Files" folder on the client system.
 - /fullscreen "yes" value instructs the remote console window to start in the full screen ("yes") mode or in the window mode ("no").
 - /TRUECOLOR "yes" value instructs the remote console window to start in the true color mode ("yes") or in 256 colors mode ("no")
5. Select **IP** check box. Leave the IP address fields empty. Configuration of the device IP address will be performed during creation of the target.
6. Select the **Login Method** check box and either select **Use KVM.net Credentials** or **Use the Following Credentials**. If you selected **Use KVM.net Credentials** all KVM.net II users and their passwords must exist in the Lantronix SecureLinx Spider. If you selected **Use the Following Credentials**, type the User Name and Password in designated fields. This user name and password must exist in the Lantronix SecureLinx Spider Unit.

7. Press **Save** button.

New Service

★ New Service

Name:

Description:

URL:

Application Path:

```
"%ProgramFiles%
\Lantronix\SecureLinx Spider
View\SecureLinx Spider
View.exe" /ip %IP% /user %
UserName% /password %
Password% /fullscreen "yes" /T
RUECOLOR "yes"
```

IP:

Port:

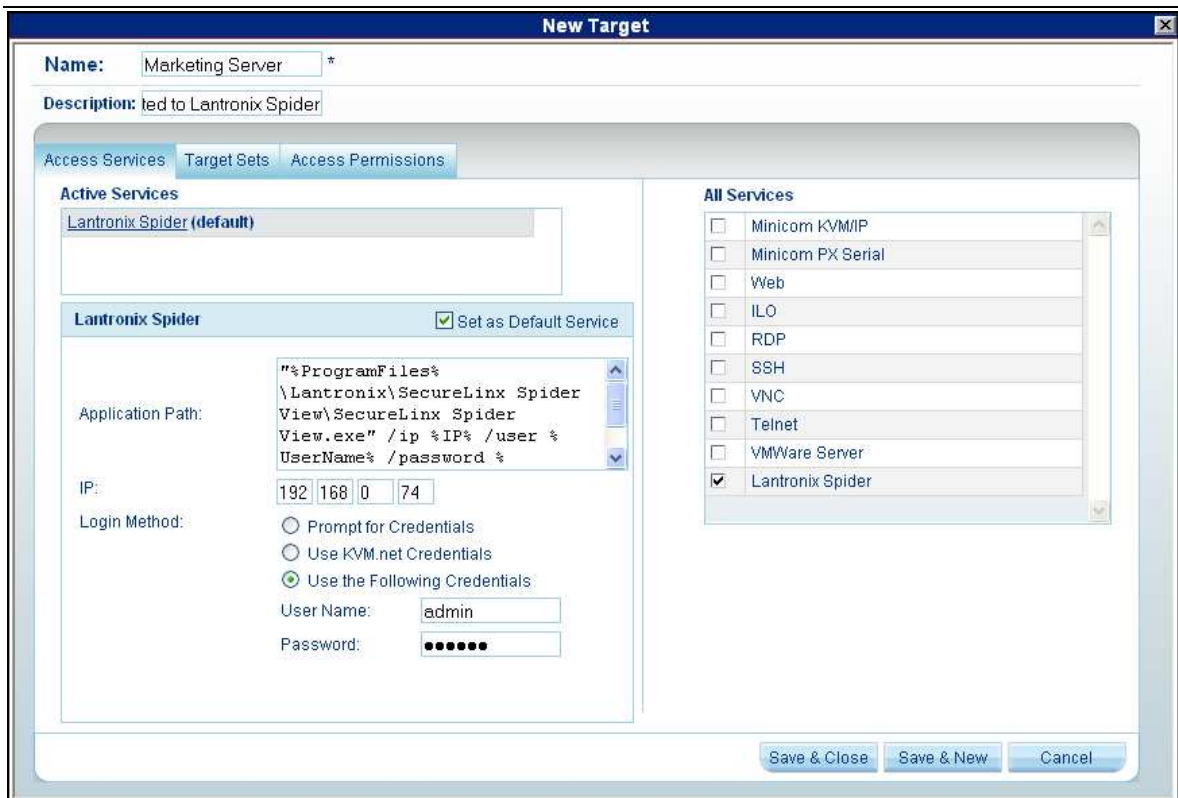
Login Method: Prompt for Credentials
 Use KVM.net Credentials
 Use the Following Credentials

User Name:

Password:

Create a Target based on the Lantronix Spider Access Service.

1. In the **Management, Targets** page click **New Target** button.
2. Give a name to the Target.
3. Provide description for the Target (optional).
4. In the **All Services** section select **Lantronix Spider**.
5. In the **All Services** section unselect **Mincom KVM/IP**.
6. Set Lantronix Spider Access Service to be a **Default Access Service**.
7. Type the Lantronix SecureLinx Spider unit IP address in the IP fields.
8. Configure the **Login Method** if it differs from one configured in the Access Service.
9. Configure the **Target Sets** and **Access Permissions** assignments and press **Save & Close** or **Save & New** button.



In the KVM.net II **Access** Section select the target connected to Lantronix SecureLinux Spider. If the Lantronix SpiderView Software is not installed in the default path, a “**Select file to launch**” dialog box will appear. Navigate to the location where the Lantronix SpiderView Software is installed, select **SecureLinux Spider View.exe** and click **Open**. Connection to Lantronix SecureLinux Spider is established.

COMMENTS:

- If connection to Lantronix SecureLinux Spider is established in full screen mode, press **Ctrl-F10** key combination to exit from the full screen mode.
- Additional command line switches can be used for Lantronix SpiderView Software:

Command Line Switch	Description
/ip <network address>	The IP address of the Lantronix SecureLinux Spider
/PORT <portnumber>	The http(s) port number for the login and the RFB port number. Default port 443.
/user <username>	Submits an User Name
/password <password>	Submits a Password (requires /user command line switch)
/https <yes/no>	Use https for the login
/autoadjust	Sends an auto adjust command just after the viewer startup
/mousesync	Sends an intelligent mouse sync command immediately after the viewer startup
/fullscreen <"yes"/"no">	Full screen mode
/TRUECOLOR <"yes"/"no">	True color mode
/SelEnc <0/1/2>	Sets the encoding to Auto, Fix or Advanced
/EXCLUSIVE_PERM <"yes"/"no">	Sets the permission to enter Exclusive Access Mode