

Title: Accessing Lantronix SecureLinx Spider from Centralized Access Management System.

No: IPA37-2

Date: Wednesday, 07 October, 2009

SUMMARY:

The specially created Access Service™ allows accessing and operating Lantronix SecureLinx Spider from Centralized Access Management interface. Lantronix SpiderView Software is required for accessing and operating the Lantronix SecureLinx Spider Units.

MORE INFORMATION:

To access and operate Lantronix SecureLinx Spider units, create a new Access Service for Lantronix SecureLinx Spider, install Lantronix SpiderView Software on all client computers and create targets with correct access parameters.

Note! Finish configuration of the Lantronix SecureLinx Spider Units prior to configuring the Centralized Access Management targets.

Download Lantronix SpiderView Software from Lantronix web site:
<http://www.lantronix.com/support/downloads.html#kvm> and install it on all client computers.

Create New Access Service™ for Lantronix SecureLinx Spider Units.

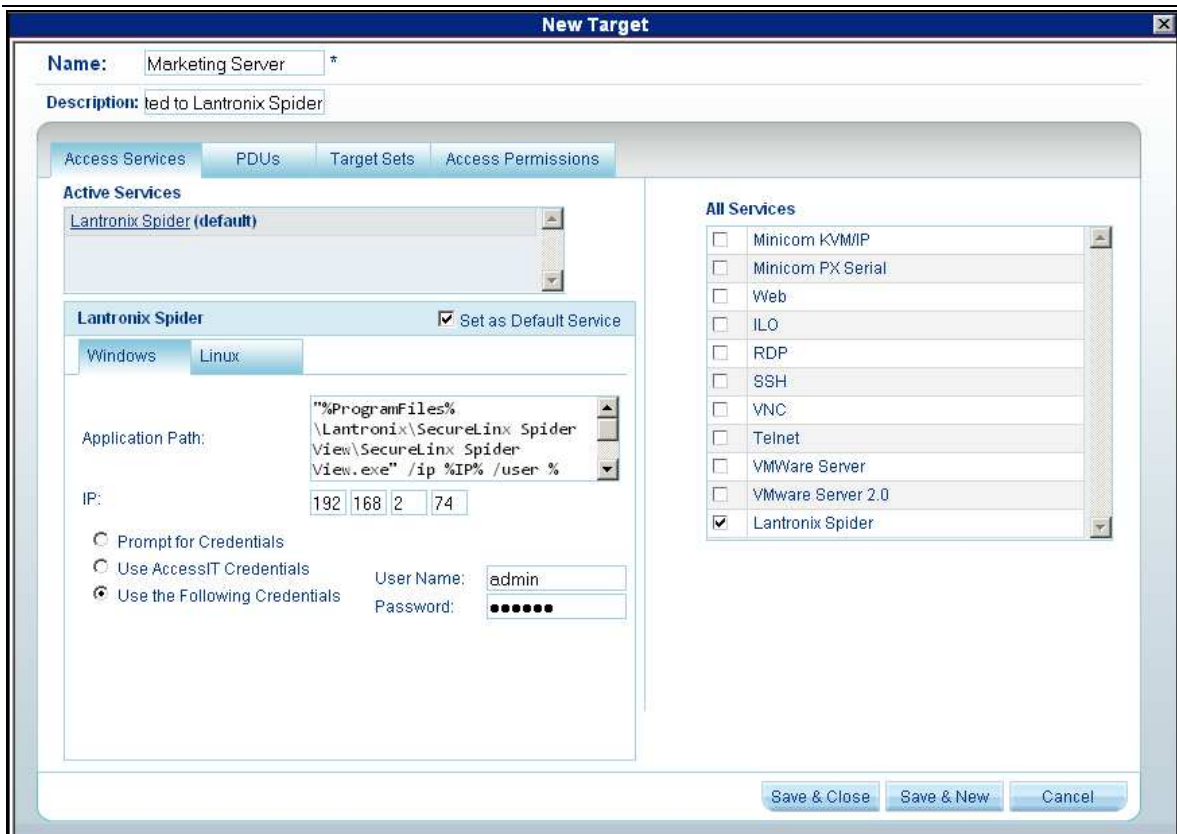
1. Click **New Service** button in **Settings > Access Services** page of the Centralized Access Management.
2. Give an explanatory name to the Access Service, e.g. Lantronix Spider
3. Provide a description to the Access Service (optional).
4. Select **Application Path** and type the following command in the corresponding field: **"%ProgramFiles%\Lantronix\SecureLinx Spider View\SecureLinx Spider View.exe" /ip %IP% /user %UserName% /password %Password% /fullscreen "yes" /TRUECOLOR "yes"** where
 - a. %ProgramFiles% - variable indicating the location of the "Program Files" folder on the client system.
 - b. /fullscreen "yes" value instructs the remote console window to start in the full screen ("yes") mode or in the window mode ("no").
 - c. /TRUECOLOR "yes" value instructs the remote console window to start in the true color mode ("yes") or in 256 colors mode ("no")
5. Select **IP** check box. Leave the IP address fields empty. Configuration of the device IP address will be performed during creation of the target.
6. Select the **Login Method** check box and either select **Use KVM.net II/AccessIT Credentials** or **Use the Following Credentials**. If you selected **Use KVM.net II/AccessIT Credentials** all Centralized Access Management System users and their passwords must exist in the Lantronix SecureLinx Spider. If you selected **Use**

the Following Credentials, type the User Name and Password in designated fields. This user name and password must exist in the Lantronix SecureLinx Spider Unit.

7. Press **Save** button.

Create a Target based on the Lantronix Spider Access Service.

1. In the **Management, Targets** page click **New Target** button.
2. Give a name to the Target.
3. Provide description for the Target (optional).
4. In the **All Services** section select **Lantronix Spider**.
5. In the **All Services** section unselect **Mincom KVM/IP**.
6. Set Lantronix Spider Access Service to be a **Default Access Service**.
7. Type the Lantronix SecureLinx Spider unit IP address in the IP fields.
8. Configure the **Login Method** if it differs from one configured in the Access Service.
9. Configure the **Target Sets** and **Access Permissions** assignments and press **Save & Close** or **Save & New** button.



In the **Access** Section select the target connected to Lantronix SecureLinx Spider. If the Lantronix SpiderView Software is not installed in the default path, a **“Select file to launch”** dialog box will appear. Navigate to the location where the Lantronix SpiderView Software is installed, select **SecureLinx Spider View.exe** and click **Open**.

Connection to Lantronix SecureLinx Spider is established.

COMMENTS:

- If connection to Lantronix SecureLinx Spider is established in full screen mode, press **Ctrl-F10** key combination to exit from the full screen mode.
- Additional command line switches can be used for Lantronix SpiderView Software:

Command Line Switch	Description
/ip <network address>	The IP address of the Lantronix SecureLinx Spider
/PORT <portnumber>	The http(s) port number for the login and the RFB port number. Default port 443.
/user <username>	Submits an User Name
/password <password>	Submits a Password (requires /user command line switch)
/https <yes/no>	Use https for the login
/autoadjust	Sends an auto adjust command just after the viewer startup
/mousesync	Sends an intelligent mouse sync command immediately after the viewer startup
/fullscreen <"yes"/"no">	Full screen mode
/TRUECOLOR <"yes"/"no">	True color mode
/SelEnc <0/1/2>	Sets the encoding to Auto, Fix or Advanced
/EXCLUSIVE_PERM <"yes"/"no">	Sets the permission to enter Exclusive Access Mode

- Lantronix SpiderView Software currently doesn't support Linux operating systems. Linux users should manually login to the SecureLinux Spider unit in order to operate it from Minicom Centralized Access Management System.

Configure the Access Service and Targets for Linux users

1. Click the **Linux** tab of the Lantronix Spider Access Service.
2. Select the **URL** and type the following command: **http://%IP%**
3. Leave IP field empty. Configuration of the device IP address will be performed during creation of the target.

The screenshot shows a 'New Service' configuration window with the following details:

- Windows/Linux Tabs:** The 'Linux' tab is selected.
- Name:** Lantronix Spider
- Description:** Lantronix Spider
- URL:** http://%IP% (Selected)
- Application Path:** (Empty)
- IP:** (Checked)
- Port:** (Empty)
- Login Method:** Use the Following Credentials (Selected)
 - User Name: admin
 - Password: (Masked with dots)

Buttons for 'Save' and 'Cancel' are located at the bottom right of the window.

When creating a target based on the Lantronix Spider Access Service, verify that the Linux tab contains the correct IP address of the Lantronix Spider unit. This IP address is set during the configuration of the Windows tab of the Target.

