

Title: Adding VMware® ESX Access Service™ to Centralized Access Management System.

No: IPA42-2

Date: Thursday, 16 July, 2009

SUMMARY:

VMware ESX Server is an enterprise-level virtualization product offered by VMware, Inc. ESX Server is a component of VMware's larger offering, VMware Infrastructure, which adds management and reliability services to the core server product. A specially configured Access Service allows operation of the virtual machines running on VMware ESX 3, VMware ESXi 3 and VMware Infrastructure 3 from Minicom Centralized Access Management System interface.

MORE INFORMATION:

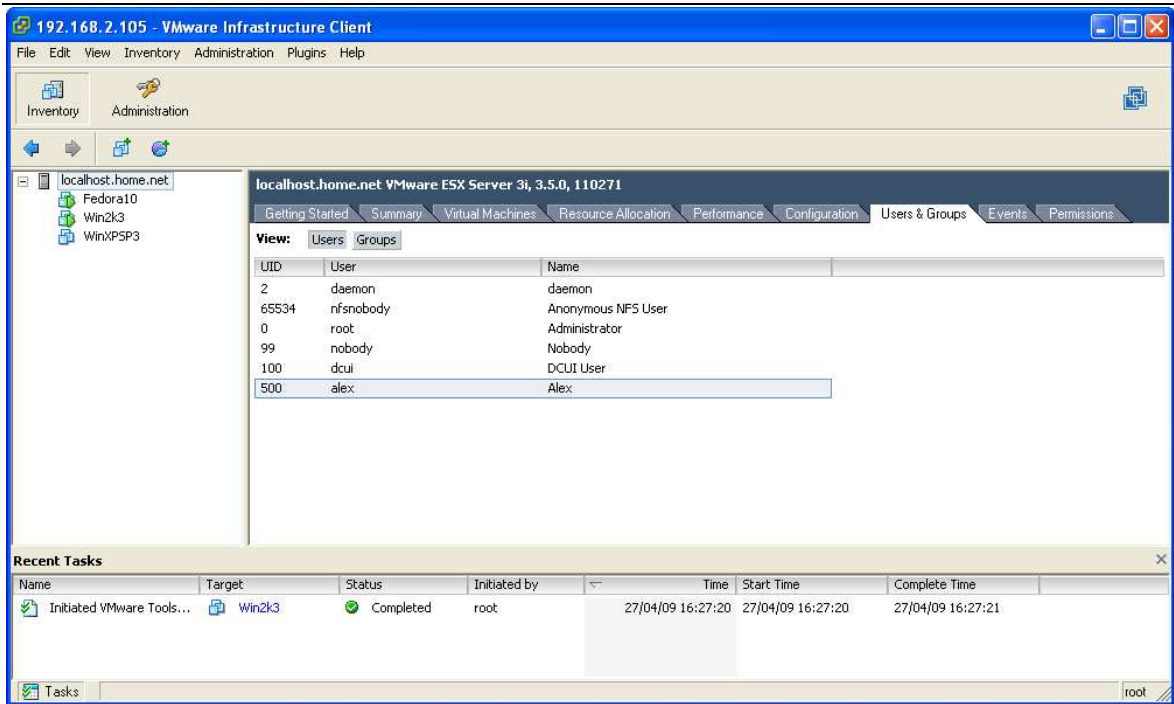
New VMware Remote Console (VMware VMRC) allows accessing the virtual machine consoles independent of VMware Infrastructure Client management interface. In order to access VMware virtual machines, download and install VMware VMRC application for Windows from Minicom web site:

<http://support.minicom.com/KVMnet/Tools/VMwareVMRC.exe>

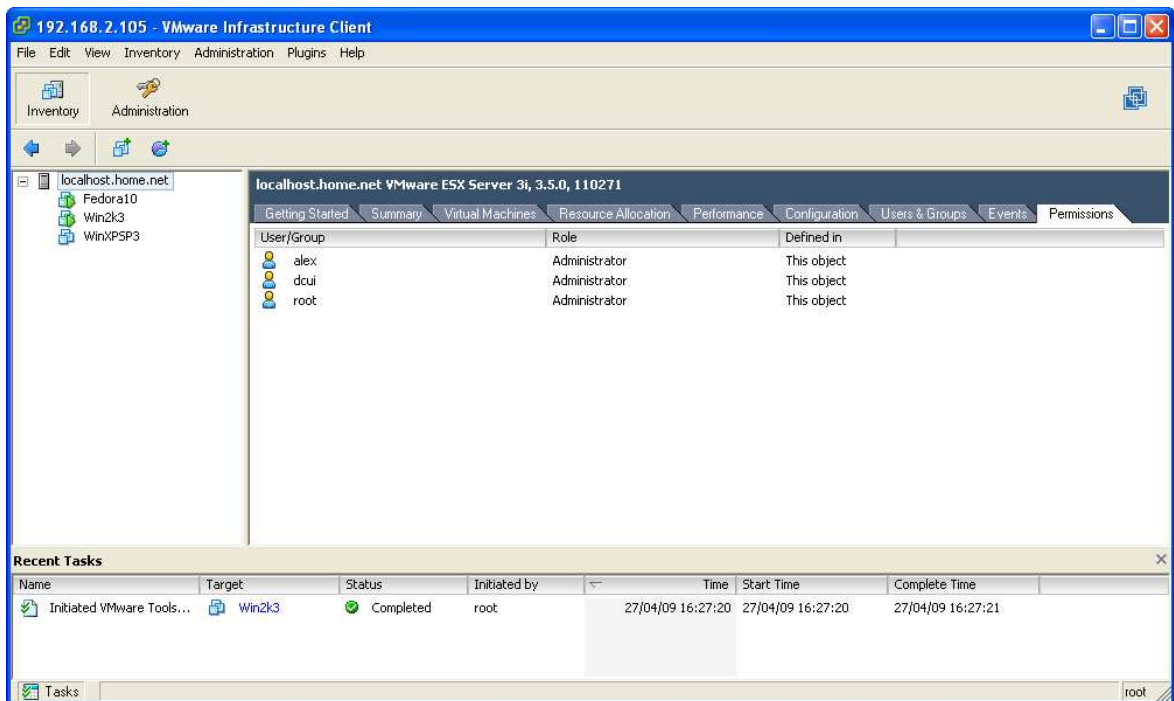
Create and configure a new Access Service

Create a New Access Service™ for VMware ESX or VMware ESXi server.

1. Click **New Service** button in **Settings > Access Services** page of the Centralized Management System.
2. Give an explanatory name to the Access Service, e.g. VMware ESX Server.
3. Provide description to the Access Service (optional).
4. Select the **Application Path** and type the following command in the corresponding field: **%ProgramFiles%\VMwareVMRC\vmware-vmrc.exe -h %IP%:%Port% -u %UserName% -p %Password%**
5. Select **IP** check box and type the IP address of the VMware ESX Server.
6. Select **Port** check box and type the TCP port number of the VMware ESX Server. The VMware ESX Server default TCP port is 443.
7. Select the **Login Method** check box and either select **Use KVM.net II Credentials** for KVM.net II or **Use AccessIT Credentials** for AccessIT or **Use the Following Credentials**. If you selected **Use KVM.net II Credentials/Use AccessIT Credentials** all Centralized Management users and their passwords must exist in VMware ESX Server. If you selected **Use the Following Credentials**, type the User Name and Password in designated fields. This user name and password must exist in VMware ESX Server. Add users to the VMware ESX Server on the Users tab and then assign the users' permissions on the Permissions tab, see screenshots below.

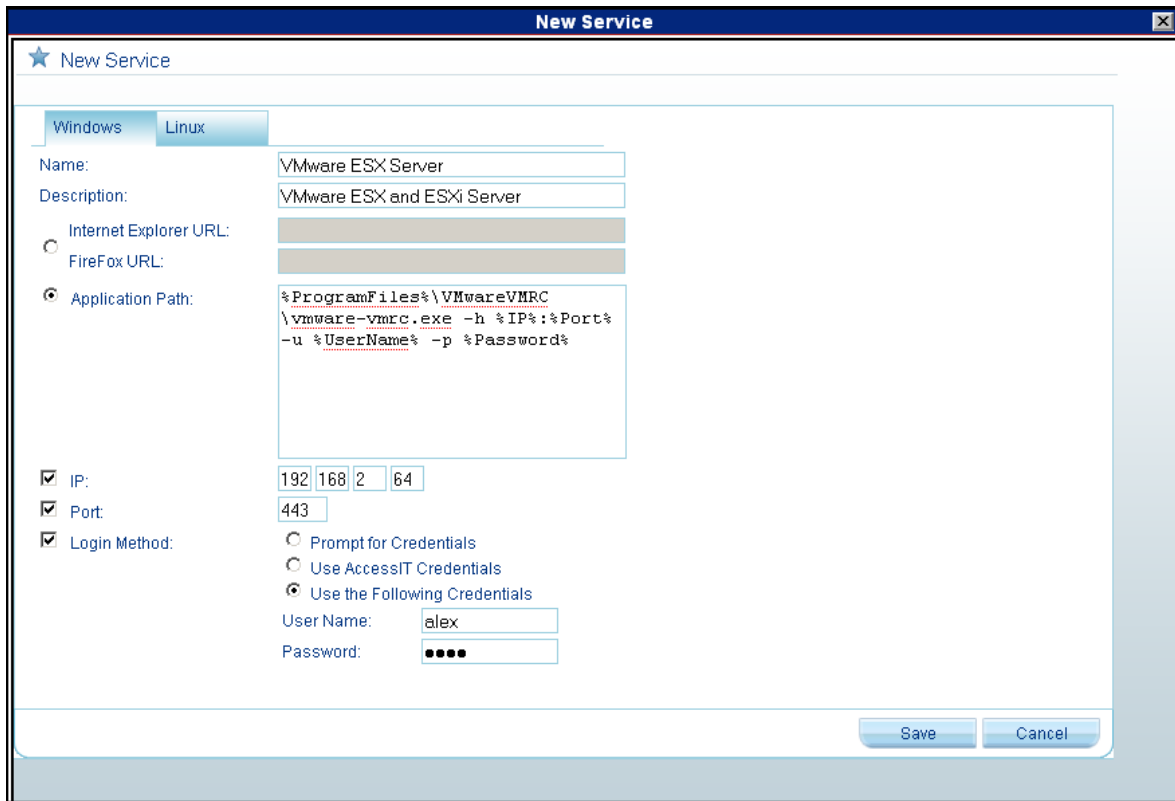


Add users to the VMware ESX Server on the Users tab



Assign the users' permissions on the Permissions tab

8. Press **Save** button.

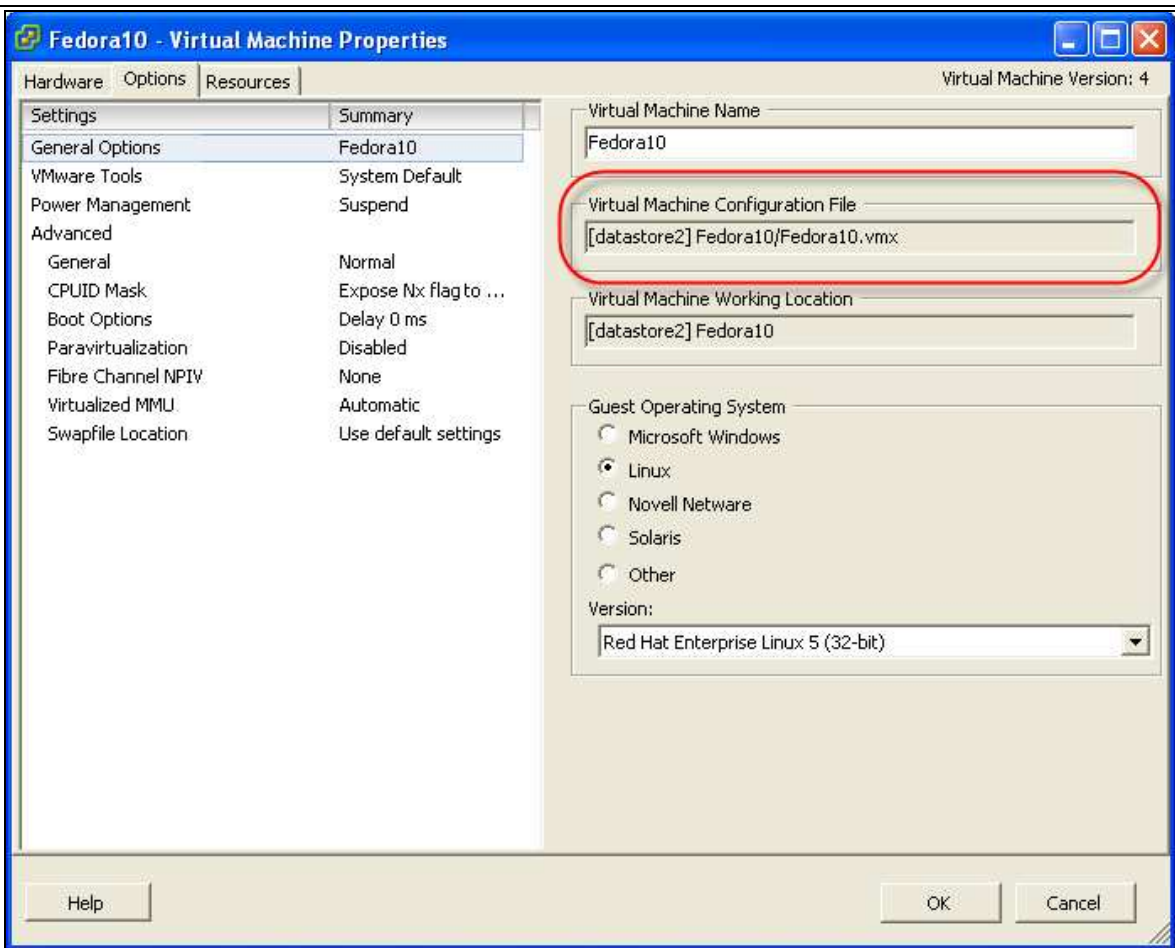


Configure the VMware ESX and ESXi Access Service.

Create and configure the targets based on the VMware ESX Access Service.

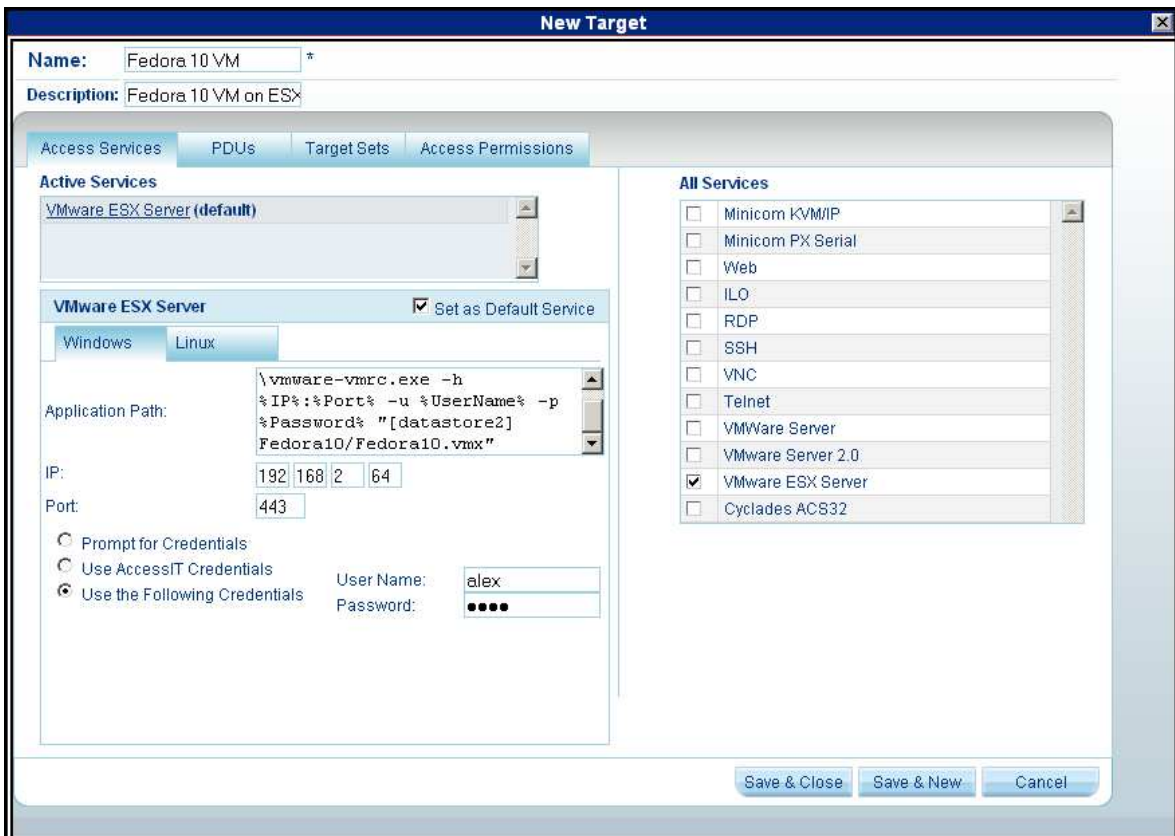
Create a virtual machine Target based on the VMware ESX Access Service.

1. In the **Management, Targets** page click **New Target** button.
2. Give a name for the virtual machine Target.
3. Provide description for the Target (optional).
4. In the **All Services** section select **VMware ESX Server**.
5. In the **All Services** section unselect **Mincom KVM/IP**.
6. Set VMware ESX Server Access Service to be a **Default Access Service**.
7. In the end of the **vmware-vmrc.exe** command line in the **Application Path** field, type the Virtual Machine Configuration file as it appears in the General Options section of the Option tab in the Virtual Machine Properties dialog of the VMware Infrastructure Client when it connected to the ESX Server, e.g.
%ProgramFiles%\VMwareVMRC\vmware-vmrc.exe -h %IP%:%Port% -u %UserName% -p %Password% "[datastore2] Fedora10/Fedora10.vmx"



Location of the Virtual Machine Configuration File.

8. Configure the **Target Sets** and **Access Permissions** assignments and press **Save & Close** or **Save & New** button.

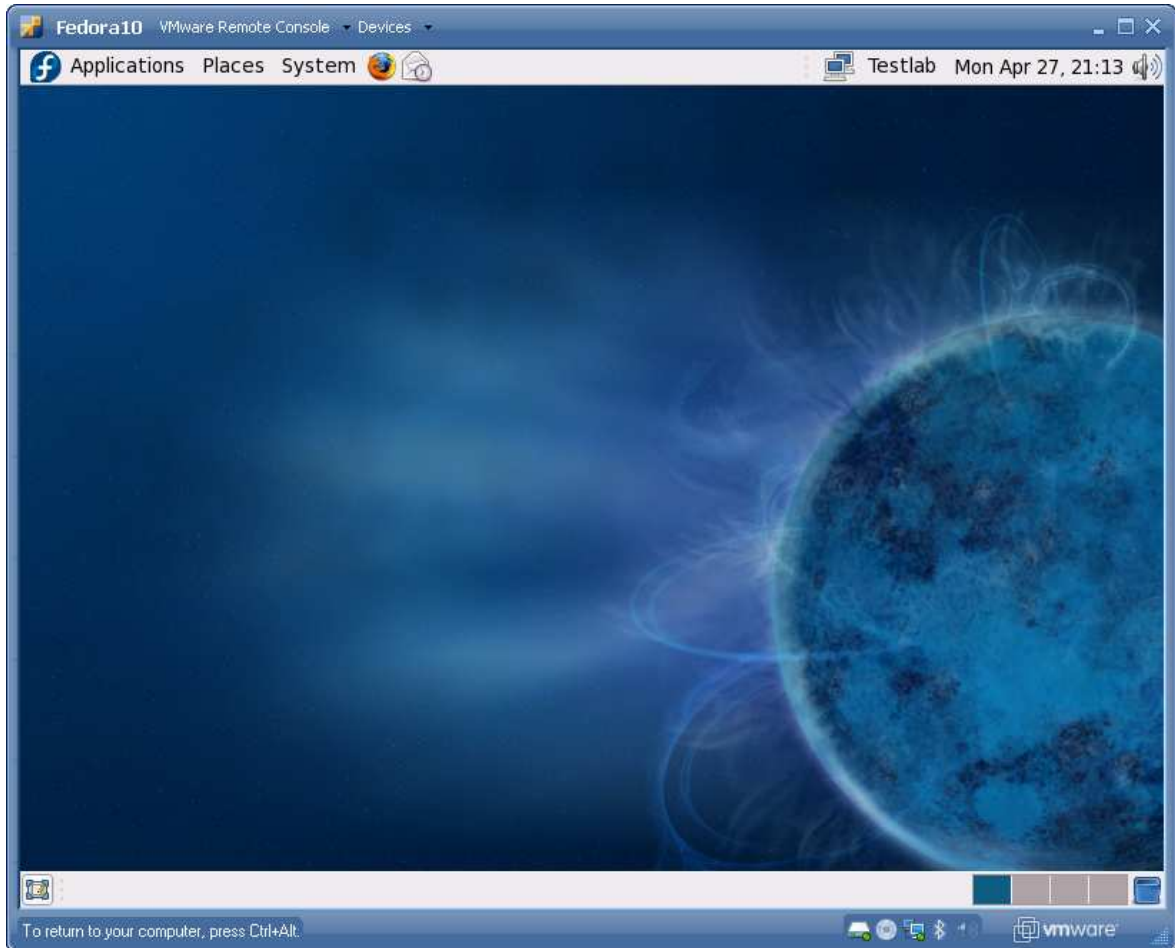


Virtual Machine Target configuration.

Operating the targets based on the VMware ESX Access Service.

To operate the virtual machine target, click the virtual machine target name or on the blue star on the right of the target name in the Centralized Management System **Access** Section. If “**Select file to launch**” dialog box appears, navigate to the location where the **vmware-vmrc.exe** application is installed and click **Open**.

Connection to virtual machine of the VMware ESX Server is established.



VMware Virtual Machine Remote Console (VMRC) connected to virtual target.

COMMENTS:

- When you install the VMware Virtual Machine Remote Console (VMRC) using the Minicom package <http://support.minicom.com/KVMnet/Tools/VMwareVMRC.exe>, the **vmware-vmrc.exe** is located in **%ProgramFiles%\VMwareVMRC** folder.
- The table below explains the command line switches used by **vmware-vmrc.exe** application:

Command Line Switch	Description
-h	VMware Server hostname or IP address including port number
-u	User Name
-p	Password
-X	Start in Full Screen mode (Must be placed before -h switch)
Datstore name and virtual machine configuration file	Datstore path should include datstore name in square brackets, i.e. "[datstore2] Fedora10/Fedora10.vmx"