

Title: Configuring KVM Matrix support in KVM.net

No: IPA15-1

Date: Wednesday, 28 February, 2007

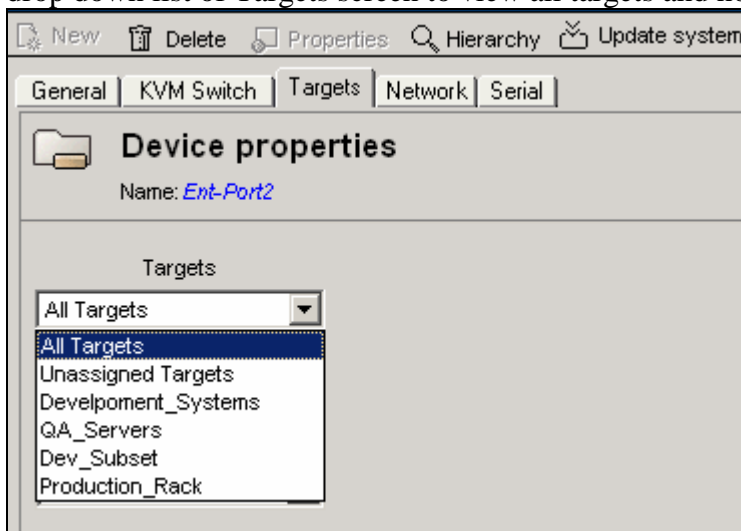
SUMMARY:

KVM.net system supports many KVM switches from different manufacturers. KVM.net supports one-user and multi-user KVM switches. Special configuration is required for correct operation of multi-user KVM switches under KVM.net system

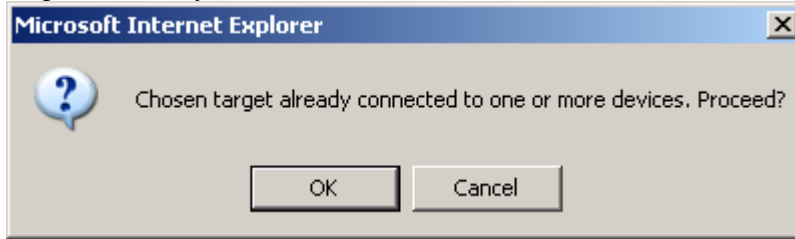
MORE INFORMATION:

To correctly support and operate the multi-user KVM switch we will need to connect one IP Access to each port of the multi-user KVM switch and assign the same target servers to the same ports.

- Create a list of target servers connected to each Server port of the multi-user KVM switch.
- Connect IP Access to each Console port of multi-user KVM switch.
- Configure IP Access to be managed by KVM.net. (Network configuration page of IP Access unit)
- In the KVM.net Manager Web interface create targets corresponding to target servers which are connected to multi-user KVM switch.
- From list of KVM Switches in the KVM.net Manager Web interface select your multi-user KVM switch.
- During configuration of the first IP Access select the KVM Switch it connected to, and then assign all target servers to KVM Switch ports.
- During configuration of second and all other IP Accesses which are connected to your multi-user KVM Switch, select the KVM Switch to which IP Access is connected, and then assign the same target servers to the same port numbers as you did when you configured the first IP Access unit. Select All Targets in selection drop down list of Targets screen to view all targets and not only Unsigned Targets:



- During the assignment of targets, the KVM.net Manager will warn you that this target is already connected to one or more devices. Press OK to proceed.



- Continue to configuring the rest of the IP Access units, paying attention to precise port matching between all IP Access units and multi-user KVM Switch ports.

When multi-user KVM Switch will be configured in this way and all connected IP Access units defined and correctly configured in KVM.net system, the user will be able to connect to all permitted target servers until there is an available connection path. The system will allow simultaneous connections to number of users which equal to number of IP Access units connected to the multi-user KVM Switch.