

Title: KVM.net System Network Ports

No: IPA16-1

Date: Saturday, 09 June, 2007

SUMMARY:

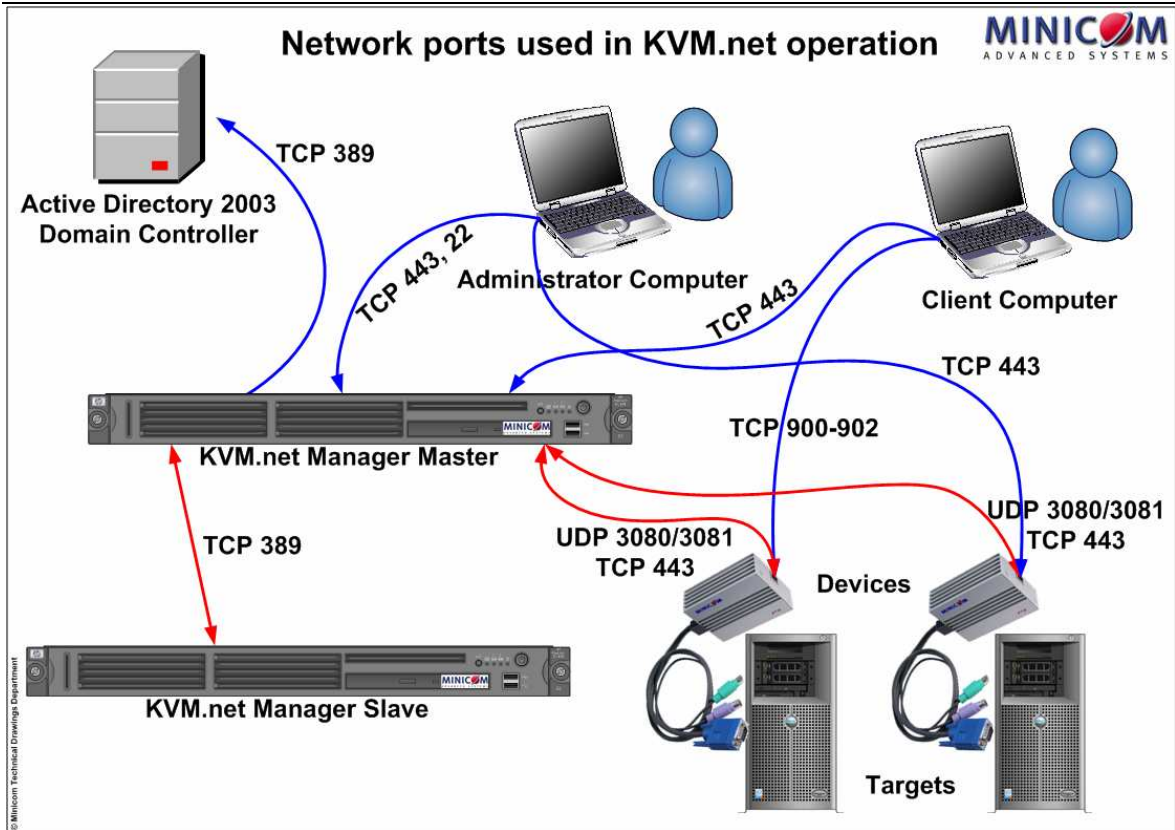
A number of TCP and UDP network ports used for day to day operation and management of KVM.net system. Understanding the direction of communication and ports is crucial for operation, configuration and daily maintenance of KVM.net system.

MORE INFORMATION:

KVM.net is a complex network system which uses many network protocols for its operation. Listed below are network protocols and their corresponding network ports used for KVM.net system operation and maintenance.

| Port Number | Direction | Description |
|----------------------------|--|--|
| UDP 3080 | Bidirectional between KVM.net and devices | Used for device discovery in broadcast (Auto Discovery) or unicast (Manual Manager IP) modes every time the device or Manager boots. |
| UDP 3081 | Unidirectional from Manager to devices | Used device discovery if port 3080 doesn't work. Device answers only on port 3080 only. |
| TCP 443 | Bidirectional between KVM.net and devices | Used for status updates, device configurations, upgrades and other communication. |
| TCP 443 | Unidirectional from Client to Manager | Used for KVM.net web interface login and operation. |
| TCP 443 | Unidirectional from Administrator to device | Used for login to device config page for initial device configuration |
| TCP 900-902 (configurable) | Unidirectional from Client to device | Used for Remote Client session (Video, keyboard, mouse control of the target) |
| TCP 389 | Unidirectional from Manager to LDAP | Used for importing the users from LDAP server and for password authentication during the user login. |
| TCP 389 | Bidirectional between KVM.net Master and KVM.net Slave units | Used for database synchronization and replication when KVM.net system operated in Replication mode (Master/Slave configuration) |
| TCP 22 | Unidirectional from Administrator to Manager | Used by Administrator for system maintenance from remote (PuTTY - SSH, WinSCP - SFTP) |

See the diagram below for graphical representations of network ports and communication direction in KVM.net system.



COMMENTS:

Other network protocols may be used by the system as well, depending on KVM.net Manager and devices' configuration.

Protocols that may be used are DHCP (UDP 67, 68) for obtaining dynamic network address from DHCP server for devices, DNS (TCP 53) for name resolving to KVM.net Manager, ping (ICMP) and other protocols.