

Title: Database corruption correction in KVM.net system

No: IPA26-1

Date: Tuesday, 23 October, 2007

SUMMARY:

Sometimes the database corruption may occur in the KVM.net units version 4.0.2.5 which were upgraded from KVM.net version 4.0.1.1. This database corruption occurs because the internal LDAP schema wasn't correctly updated during the upgrade procedure. The procedure below corrects the database corruption and prevents it from happening in the future.

MORE INFORMATION:

Sometimes the database corruption may occur in the KVM.net units version 4.0.2.5 which were upgraded from KVM.net version 4.0.1.1. You may identify the database corruption when one of two problems happens with the system:

- When you click on My Targets or All My Targets links in the KVM.net you receive the blank white page instead of list of the targets, see the screenshot below:



- Deleting of the devices from the web interface doesn't delete them from the database and they restored after restarting the KVM.net Manager.

In order to correct this database corruption, download the special correction script from the following link: <http://support.minicom.com/KVMnet/scripts/schema.fix.zip>

Unzip the downloaded file to a temporary folder on you client computer (**schema.fixer.sh**).

The update procedure is different for the KVM.net system is running in the Standalone mode and the system running in the Master/Slave mode.

Updating the system running in the Standalone mode.

Upload the **schema.fixer.sh** script to **/misc** folder in the KVM.net by using the WinSCP.exe (<http://support.minicom.com/KVMnet/winscp.exe>) software. The default root password for KVM.net system is **access**.

After uploading the **schema.fixer.sh** script to the KVM.net Manager, change the script permissions by running the following command in the **/misc** folder:

```
chmod a+x schema.fixer.sh.
```

You may run this command on the KVM.net local console or by using the PuTTY.exe

software (<http://support.minicom.com/KVMnet/putty.exe>). To navigate to the **/misc** folder, you should type the command `cd /misc` in the KVM.net local console or in the PuTTY.exe after logging to the KVM.net.

Run the script to correct the LDAP schema of the KVM.net system: `./schema.fixer.sh`.

The script will stop the services, correct the LDAP schema and restart the KVM.net Manager:

```

root@KVMnet[192.168.2.7]:/misc> ./schema.fixer.sh

Fix the database? (Y/N)
Fixing ....
Stopping services, wait
Fixing database

Relax and wait... Rebooting

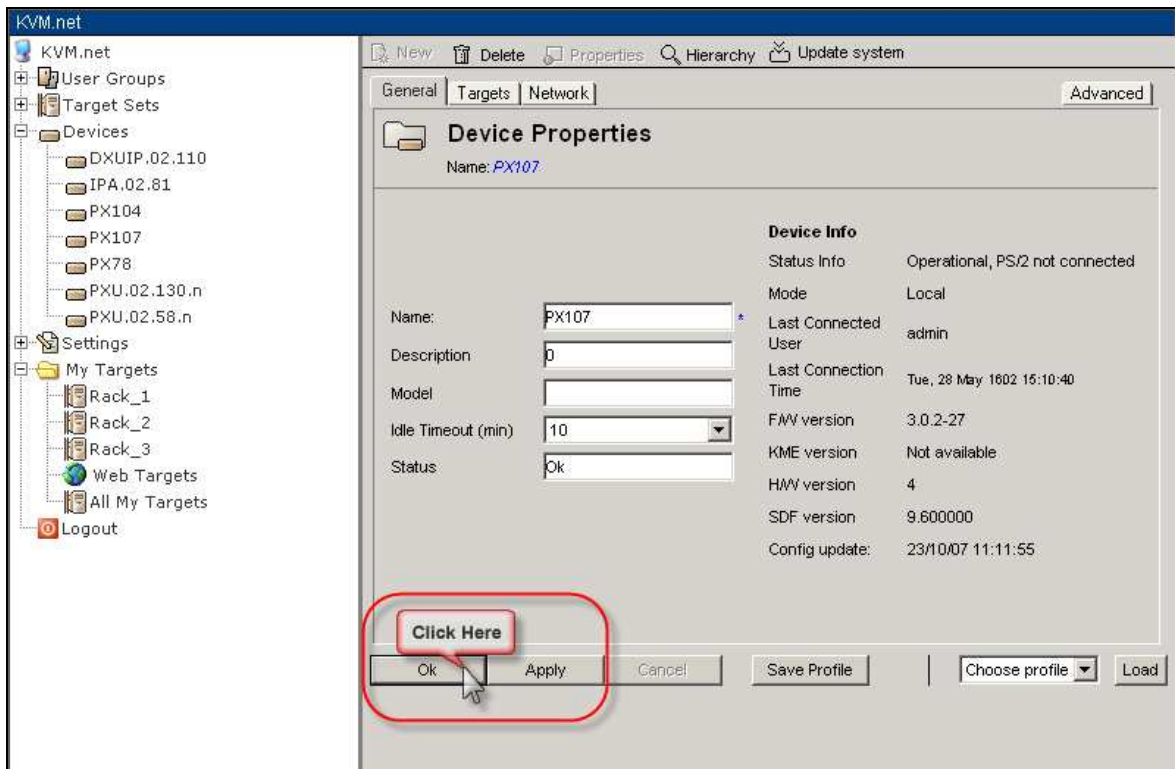
Broadcast message from root (pts/1) (Tue Oct 23 18:06:56 2007):

The system is going down for reboot NOW!
root@KVMnet[192.168.2.7]:/misc>

```

Press **Y** when the script asks to fix the database.

After the KVM.net Manager is restarted, login to its web interface with admin rights and press **OK** or **Apply** button in Device Properties pages of all the devices configured in the KVM.net system in order to correct the database entries for these devices.



Once you updated the Device Properties of all configured devices in the KVM.net system, the database corruption is corrected and you may access the All My Targets pages.

Updating the system running in the Master/Slave mode.

Upload the **schema.fixer.sh** script to **/misc** folder in the Master and Slave KVM.net Manager units by using the WinSCP.exe (<http://support.minicom.com/KVMnet/winscp.exe>) software. The default root password for KVM.net system is **access**.

After uploading the **schema.fixer.sh** script to the KVM.net Manager, change the script permissions by running the following command in the **/misc** folder:
chmod a+x schema.fixer.sh on both Master and Slave units.

You may run this command on the KVM.net local console or by using the PuTTY.exe software (<http://support.minicom.com/KVMnet/putty.exe>). To navigate to the **/misc** folder, you should type the command **cd /misc** in the KVM.net local console or in the PuTTY.exe after logging to the KVM.net.

Navigate to the **/replicom/scripts** folder by typing **cd /replicom/scripts** command and pressing Enter.

Stop the Master/Slave relationship by running the following command in the **/replicom/scripts** folder on the Master and Slave machines: **./be_stand_alone.sh**

Wait until process finishes. Navigate to the **/misc** folder by typing the following command **cd /misc** and pressing Enter on the both Master and Slave machines.

On the Slave machine run the script to correct the LDAP schema of the KVM.net system:
./schema.fixer.sh.

On the Master machine run the script to correct the LDAP schema of the KVM.net system:
./schema.fixer.sh.

The script will stop the services, correct the LDAP schema and restart the KVM.net Manager units:

```

root@KVMnet[192.168.2.7]:/misc> ./schema.fixer.sh

Fix the database? (Y/N)
Fixing ....
Stopping services, wait
Fixing database

Relax and wait... Rebooting

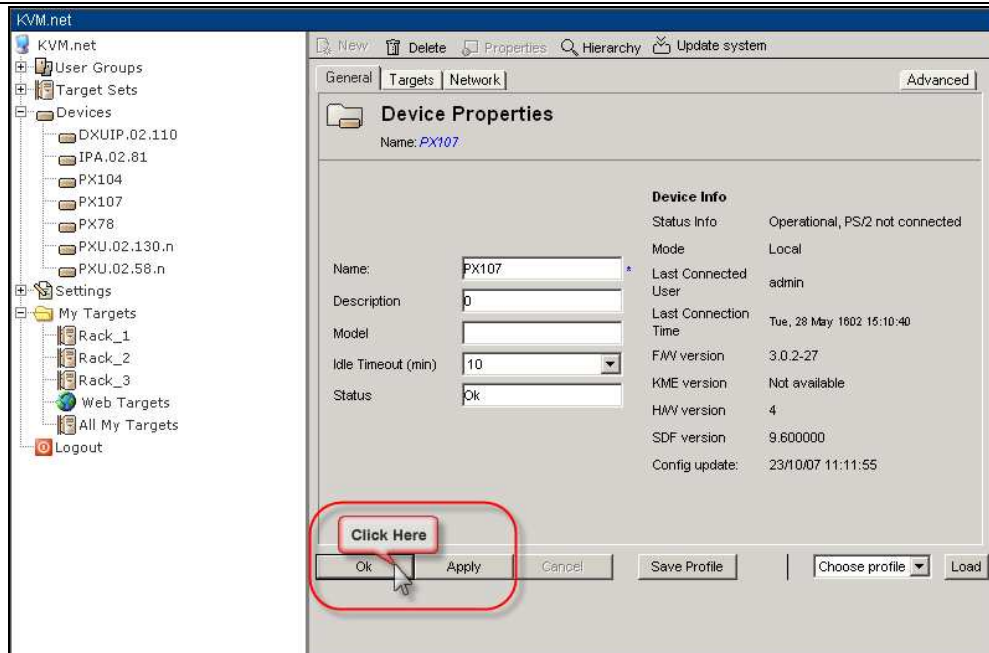
Broadcast message from root (pts/1) (Tue Oct 23 18:06:56 2007):

The system is going down for reboot NOW!
root@KVMnet[192.168.2.7]:/misc>

```

Press **Y** when the script asks to fix the database.

After the KVM.net Manager is restarted, login to the KVM.net Master machine web interface with administrator rights and press OK or Apply button in Device Properties pages of all the devices configured in the KVM.net system in order to correct the database entries for these devices.



Once you updated the Device Properties of all configured devices in the KVM.net system, the database corruption is corrected and you may access the All My Targets pages.

Enable the Master/Slave relationship:

On the Slave machine run the following script in **/replicom/scripts** folder by using local console or PuTTY.exe: `./be_slave.sh` and enter IP address of the Master machine when prompted.

On the Master machine run the following script in **/replicom/scripts** folder by using local console or PuTTY.exe: `./be_master.sh` and enter IP address of the Slave machine when prompted. During the system configuration, the KVM.net Manager will replicate the LDAP database to the Slave machine automatically.

COMMENTS:

- If the LDAP schema of your KVM.net system doesn't need to be corrected, the script **schema.fixer.sh** will inform you about this and will exit without altering the system.

```
root@KVMnet[192.168.2.10]:/misc> ./schema.fixer.sh
Congratulation. Your database schema is OK.
root@KVMnet[192.168.2.10]:/misc>
```

- We strongly recommend backing up the KVM.net system database before running the **schema.fixer.sh** script. Please refer to the IPA3-2 document <http://support.minicom.com/KVMnet/Docs/IPA3-2.pdf> for more information.