

## Title: Operating IP Device from Windows 2003 Server SP1

**No: IPA7-1**

**Date: Sunday, 18 February, 2007**

### **SUMMARY:**

When using Windows 2003 SP1 or R2 on client computer you may receive a message – “Failed to establish a connection at port: 902”) when trying to connect to Minicom IP device, but from Windows XP you can connect to it without any problem. This may happen due to the Internet Explorer Enhanced Security Configuration of Windows 2003 Server SP1 or R2.

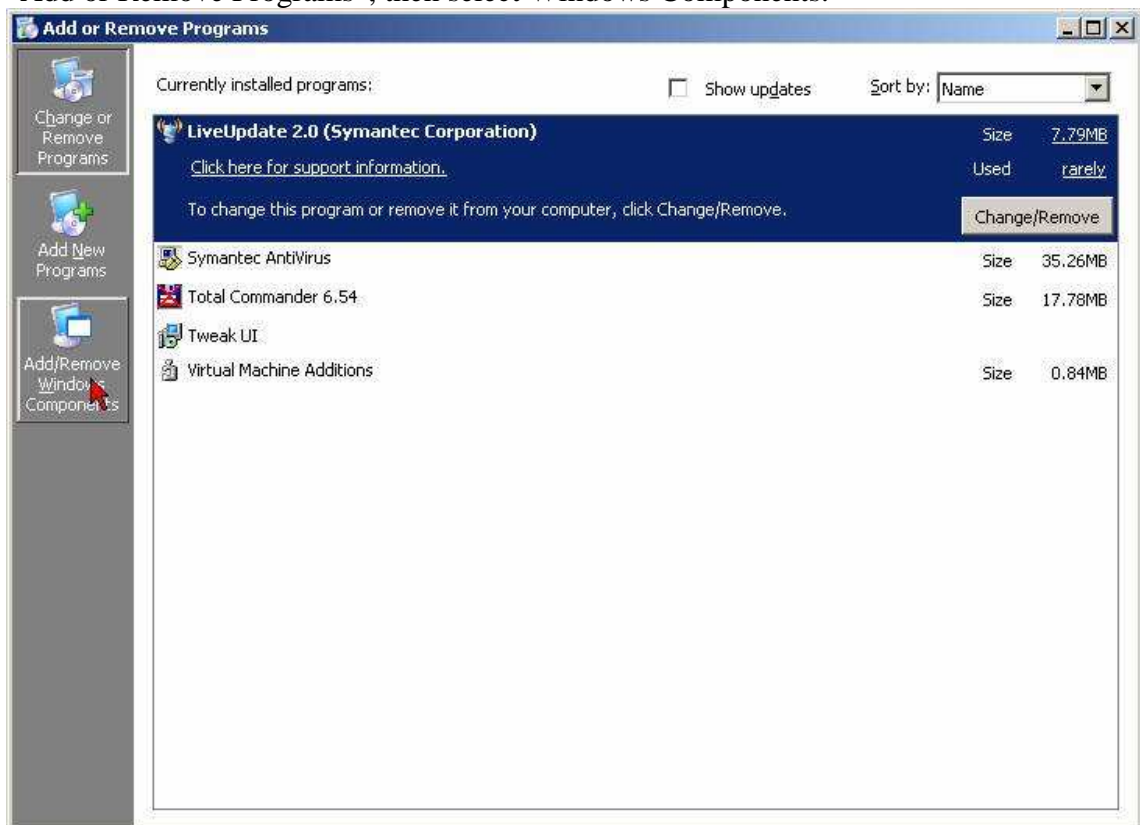
Internet Explorer reconfiguration may be needed to make remote IP device operation similar to those on Windows XP.

### **MORE INFORMATION:**

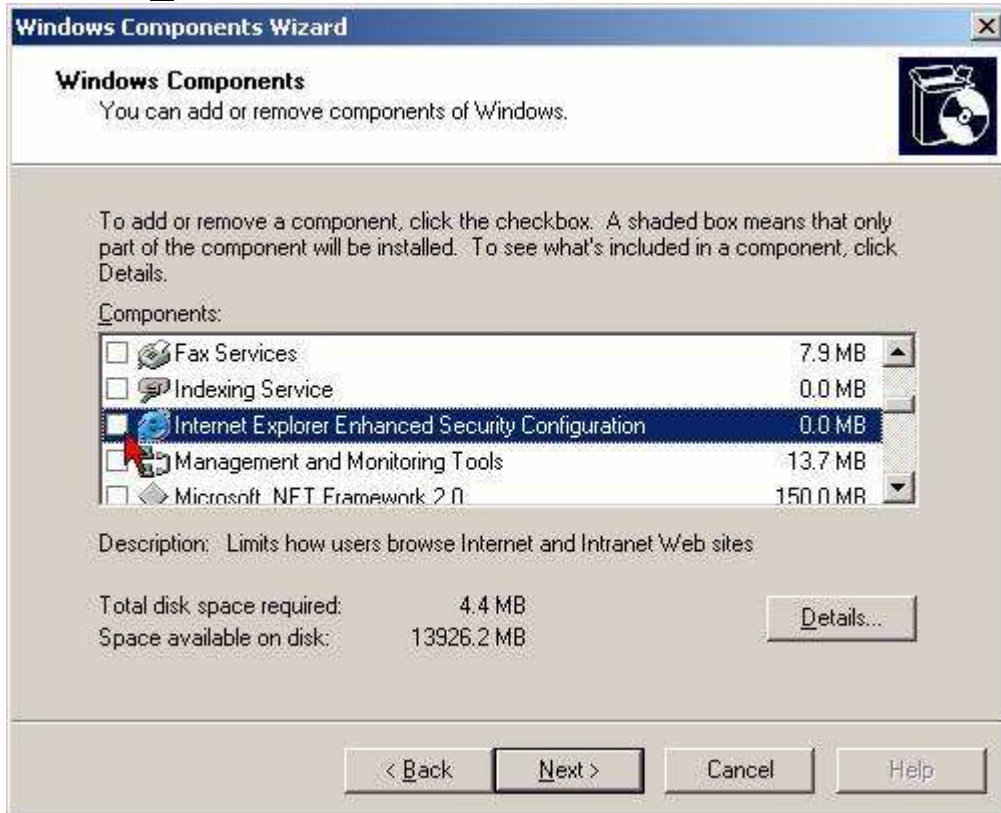
The default installation of Microsoft Windows 2003 Server SP1 (and R2) configures the Internet Explorer in very secure way. It blocks everything and asks for confirmation of every web site or IP address and blocks access to non standard ports.

Setting the IP address of IP device to trusted zone in Internet Explorer doesn’t really help, the settings of Internet Explorer prohibit using the trusted zones, and there are only trusted IP addresses.

To overcome such behavior we suggest uninstalling “Internet Explorer Enhanced Security Configuration” in Control Panel. In order to do this, open the Control Panel and click on “Add or Remove Programs”, then select Windows Components.



Find “Internet Explorer Enhanced Security Configuration” and clear the checkbox in front of it. Press **Next >**.



Wait until configuration process finishes and then press Finish.





After you finished removing the “Internet Explorer Enhanced Security Configuration”, the Internet Explorer will work in exactly the same way as it works in Windows XP and it will allow operating of Minicom IP devices in a regular way.